

How to

Swap a defective a VC-MDx Recorder with a replacement recorder

Voice Recording System VC-MDX

Version 2102

Table of Contents

1.	Back-Up.....	3
2.	Replacement	4
3.	Network settings	5
4.	Installation of VDS-II SW	6
5.	Release of VDS-II channels in VC-MDx configurator	10
6.	Reload VC-MDx Recorder settings.....	13

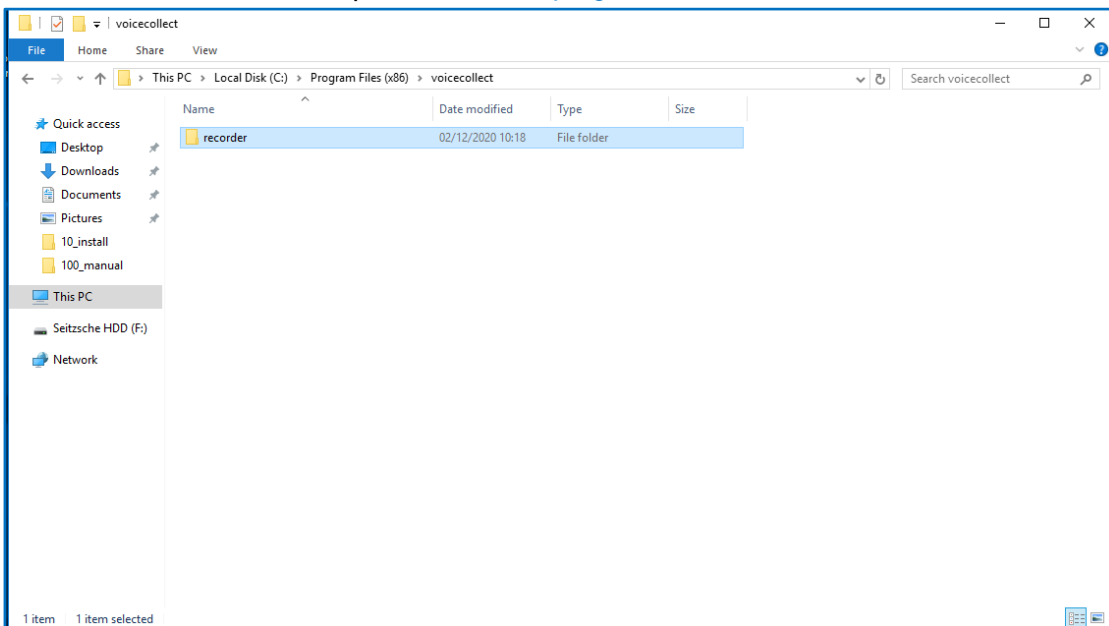
In rare cases where a recorder fails, a quick and reliable replacement of the recorder is required. You should keep a spare recorder for this.

1. Back-Up

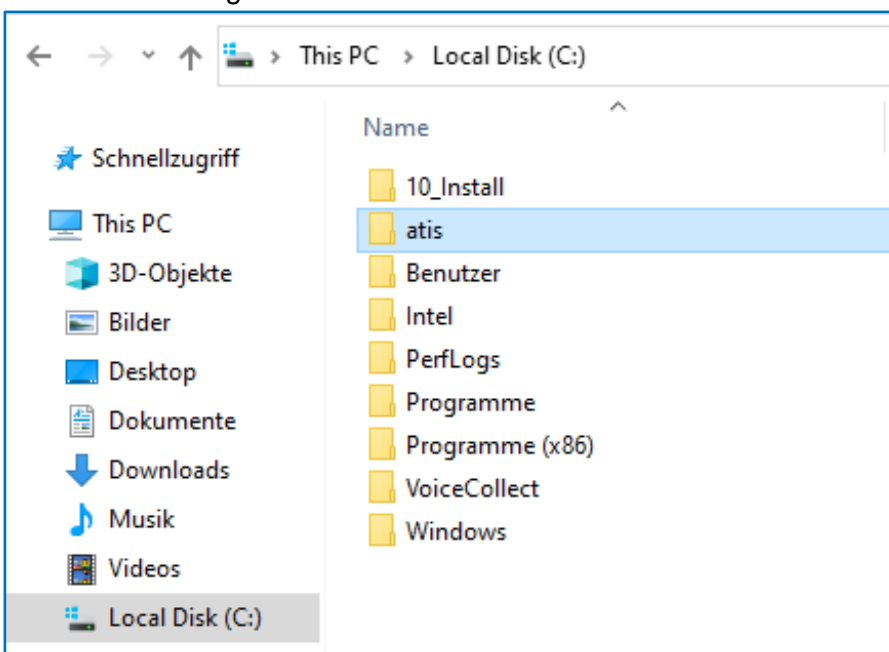
It is mandatory, not only for replacement cases, to save the VC-MDx recorder setup and configuration.

Please save the following folders to an external media:

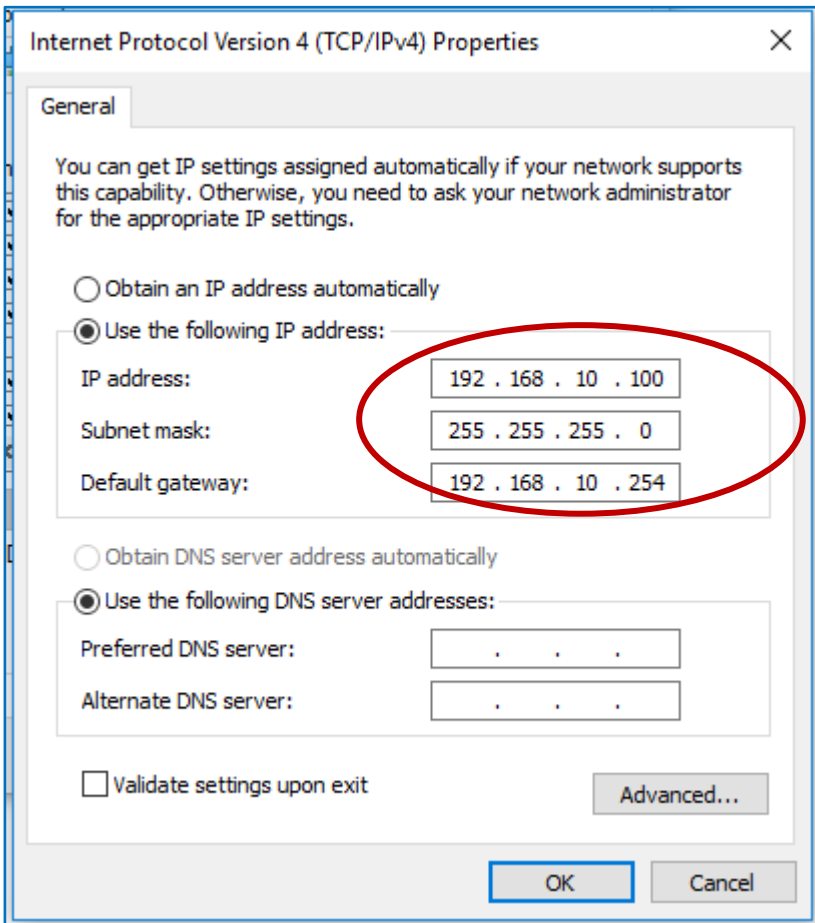
The VC-MDx recorder setup: The folder `c:\programfiles\voicecollect` must be saved:



The VDS-II settings: The folder `c:\atis` must be saved.



Check and note the recorders network settings.



Example

2. Replacement

Remove all cables in the back, release the screws and remove the defective VC-MDx recorder. Insert the spare VC-MDx recorder, fix the screws and connect all cables in the back and start the recorder.



Power On

VC-MDx Server Model COTS-E

3. Network settings

The VC-MDx Recorder Software is already installed. The required SW license Dongle is already inserted in an internal USB slot. The SW license dongle from defective recorder will not be used and **must not be inserted** in the new Recorder.

Before you can configure the recorder and the VDS-II Interface (VoIP ED137) you have to enter the IP address settings.

Internet Protocol Version 4 (TCP/IPv4) Properties

General

You can get IP settings assigned automatically if your network supports this capability. Otherwise, you need to ask your network administrator for the appropriate IP settings.

Obtain an IP address automatically

Use the following IP address:

IP address: 192 . 168 . 10 . 100

Subnet mask: 255 . 255 . 255 . 0

Default gateway: 192 . 168 . 10 . 254

Obtain DNS server address automatically

Use the following DNS server addresses:

Preferred DNS server: . . .

Alternate DNS server: . . .

Validate settings upon exit

Advanced...

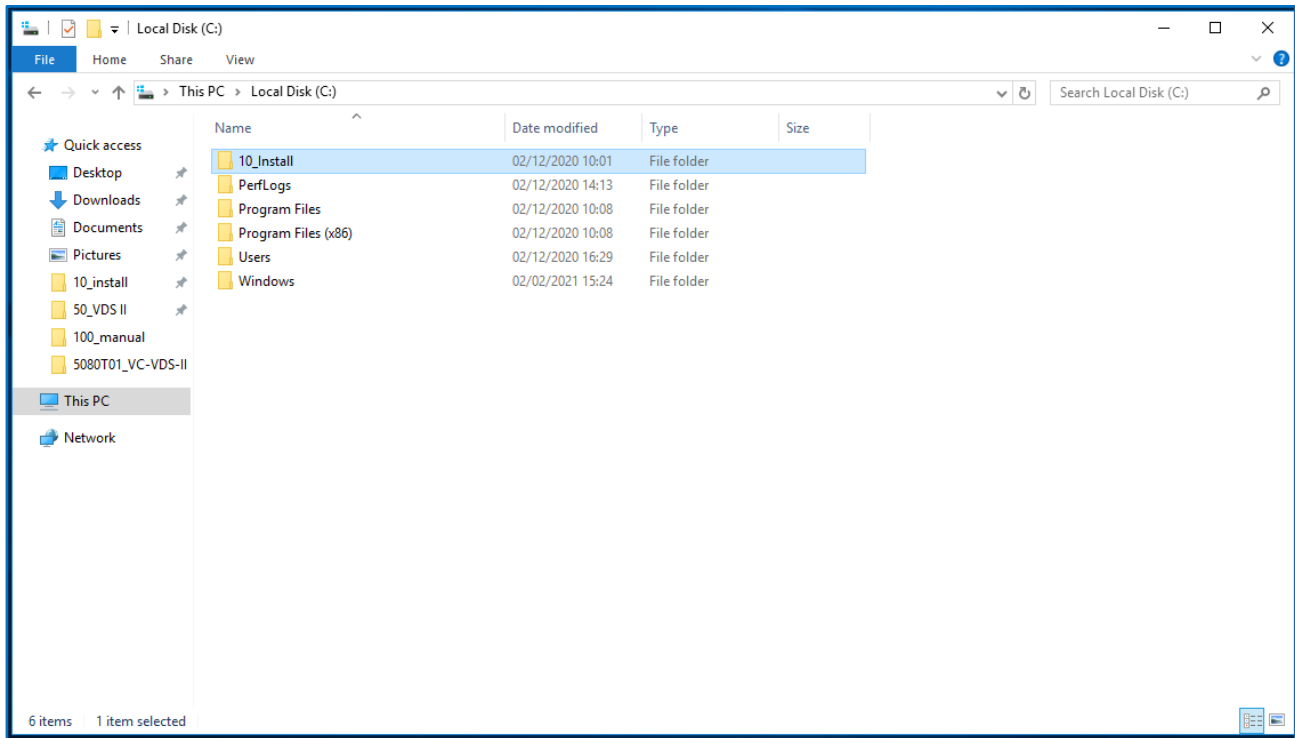
OK Cancel

Example

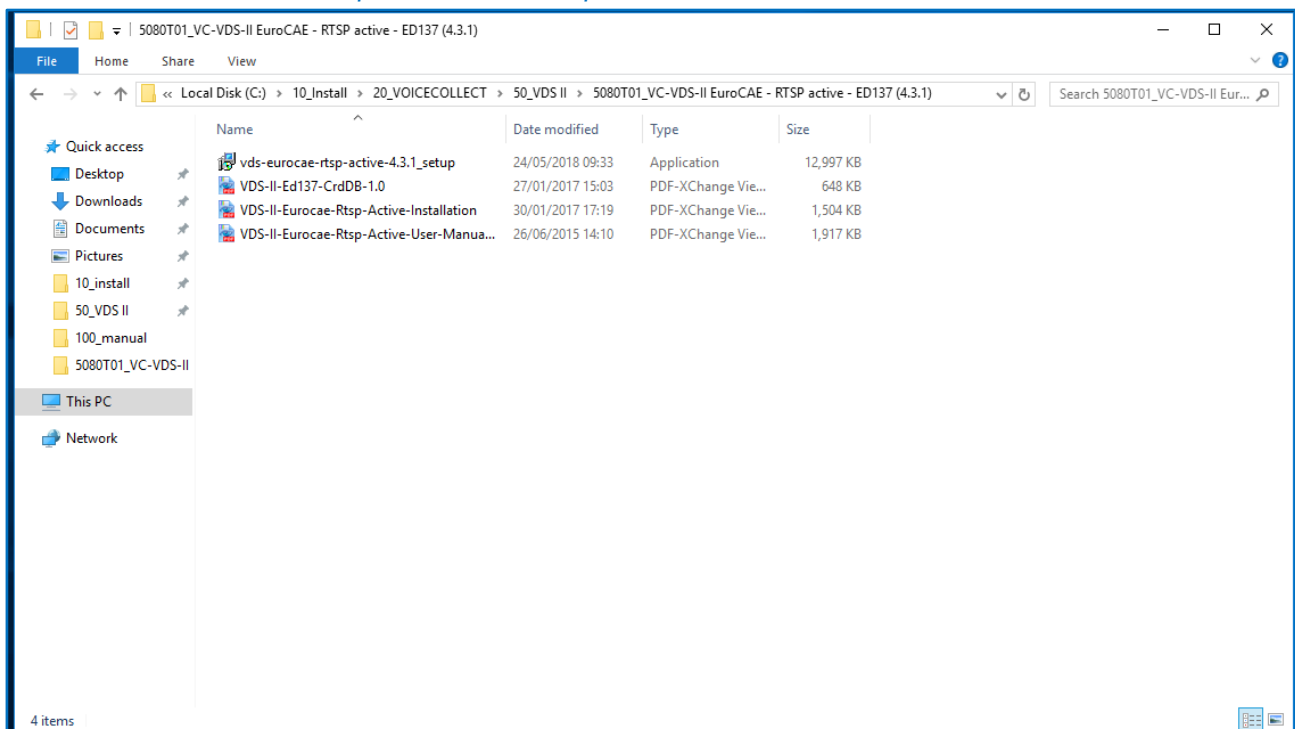
4. Installation of VDS-II SW

Start the installation while opening the installation file under:

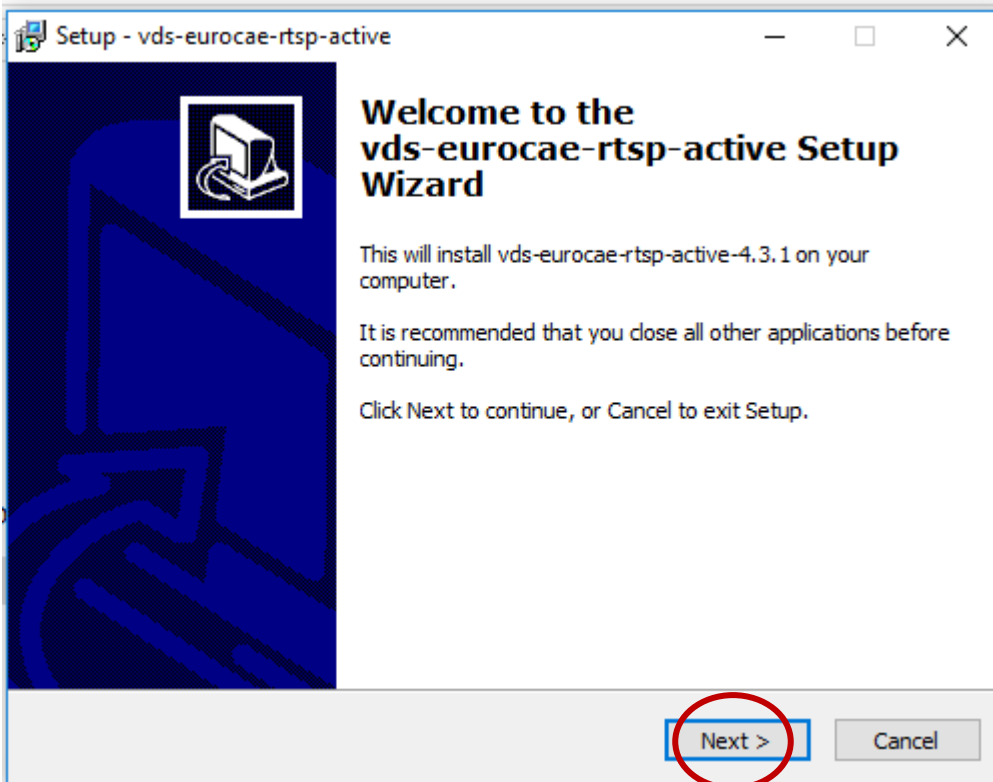
C:\10_install\20_VOICECOLLECT\50_VDS-II\5080T01_VC-VDS II EuroCAE -RTSP active -ED137 (4.3.1)



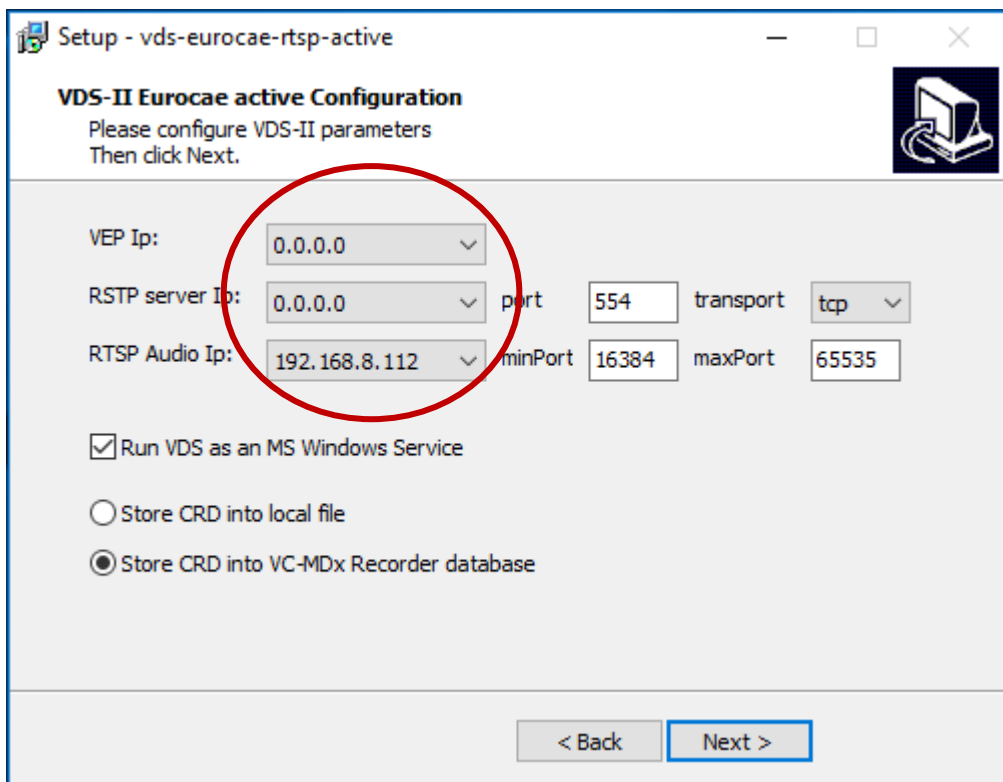
Execute file: *vds-eurocae-rtsp-active-4.3.1_setup.exe*



The following window appears:



Press „Next“, the following window appears:



Enter in these 3 fields the Recorder IP address

Setup - vds-eurocae-rtsp-active

VDS-II Eurocae active Configuration
Please configure VDS-II parameters
Then click Next.

VEP Ip: 192.168.10.100

RSTP server Ip: 192.168.10.100 port 554 transport tcp

RTSP Audio Ip: 192.168.10.100 minPort 16384 maxPort 65535

Run VDS as an MS Windows Service

Store CRD into local file

Store CRD into VC-MDx Recorder database

< Back Next >

Click „Next“ and the following window appears:

Setup - vds-eurocae-rtsp-active

VDS-II Eurocae active Configuration - CRD database
Please, enter settings for the connection to VC-MDx Recorder database
Then click Next.

For special setups, look for your database instance name (default is SQLEXPRESS).

Database Type MICROSOFT SQL

Database instance \SQLEXPRESS

Database IP address 127.0.0.1

Database TCP port 1433

User sa

Password atis:0000

< Back Next >

Select the type of the database: (PostgreSQL.) and enter the database IP address:

Setup - vds-eurocae-rtsp-active

VDS-II Eurocae active Configuration - CRD database

Please, enter settings for the connection to VC-MDx Recorder database
Then click Next.

For special setups, look for your database instance name (default is SQLEXPRESS).

Database Type	POSTGRES 9.x
Database instance	/crddb
Database IP address	192.168.10.100
Database TCP port	5432
User	postgres
Password	atis

< Back Next >

Click „Next“ and „Finish“. The VDS-II is installed.

5. Release of VDS-II channels in VC-MDx configurator

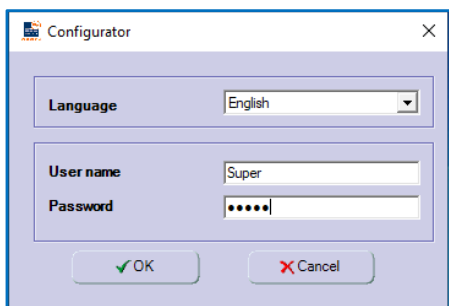
Start the VC-MDx Configurator

Select *Start > All Programs > VoiceCollect > VC-MDx Configurator* or use the desktop shortcut **VC-MDx Configurator**.

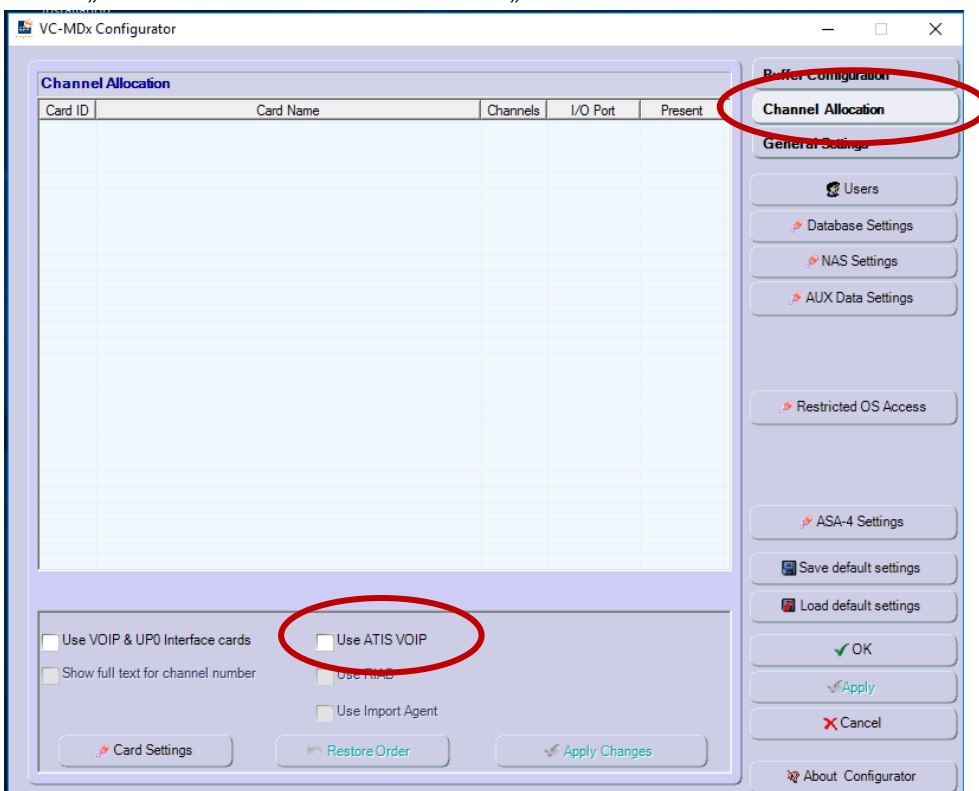


Use the following default login credentials after installation:

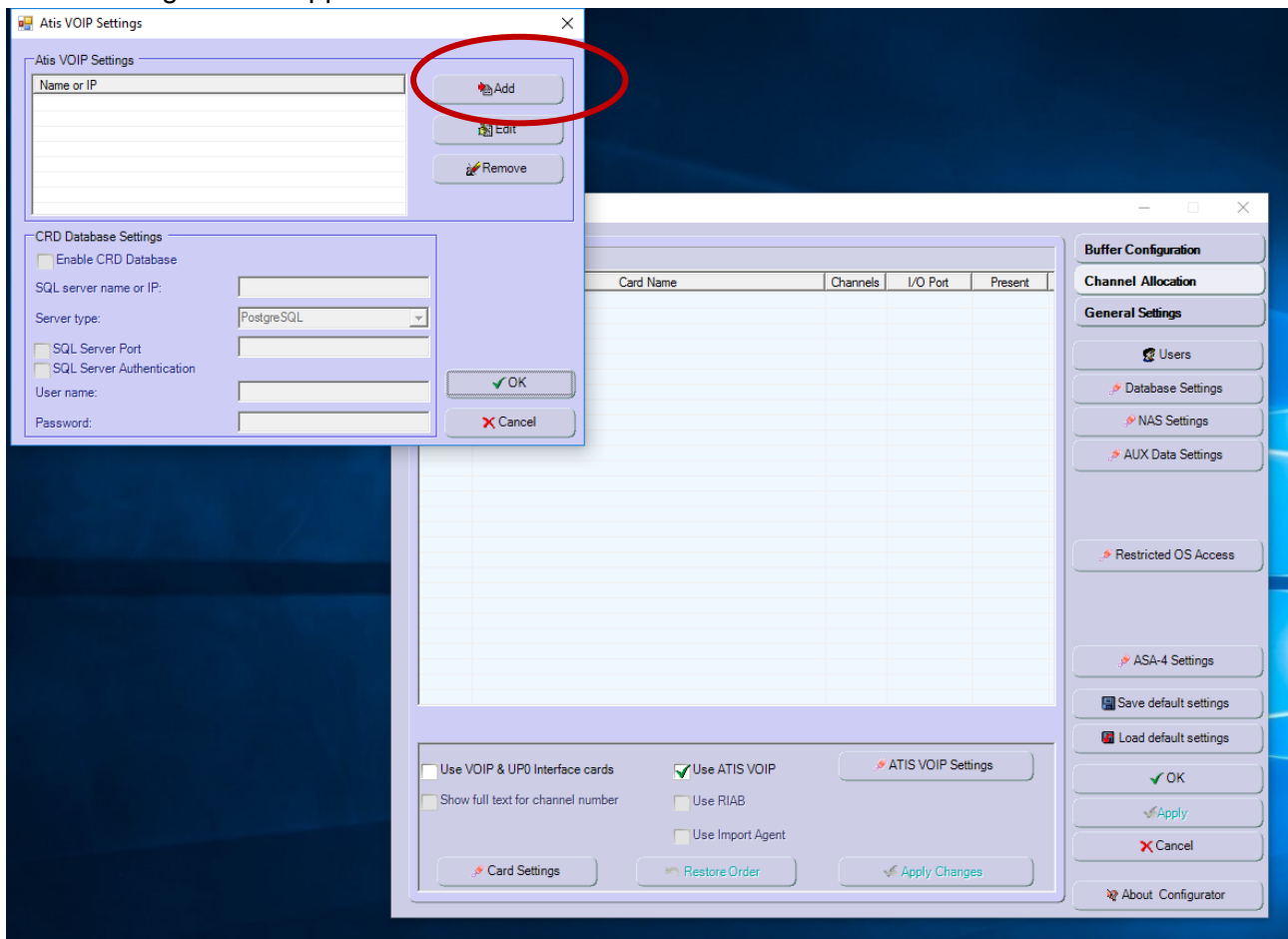
User name **Super**
Password **Super**



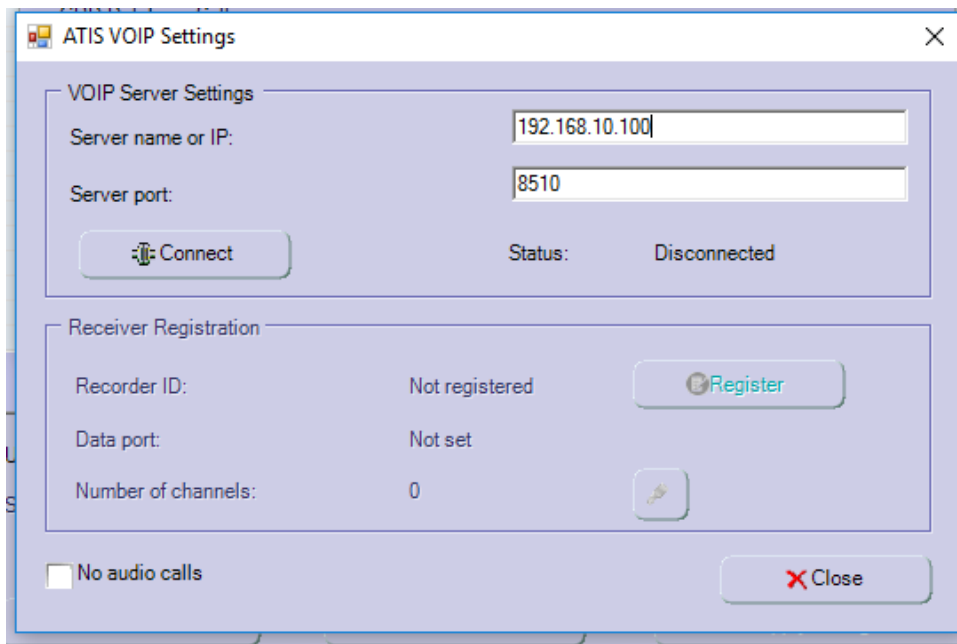
Press „Channel Allocation“ and select „Use ATIS VoIP“



The following window appears:



Click „Add“ and the following window appears



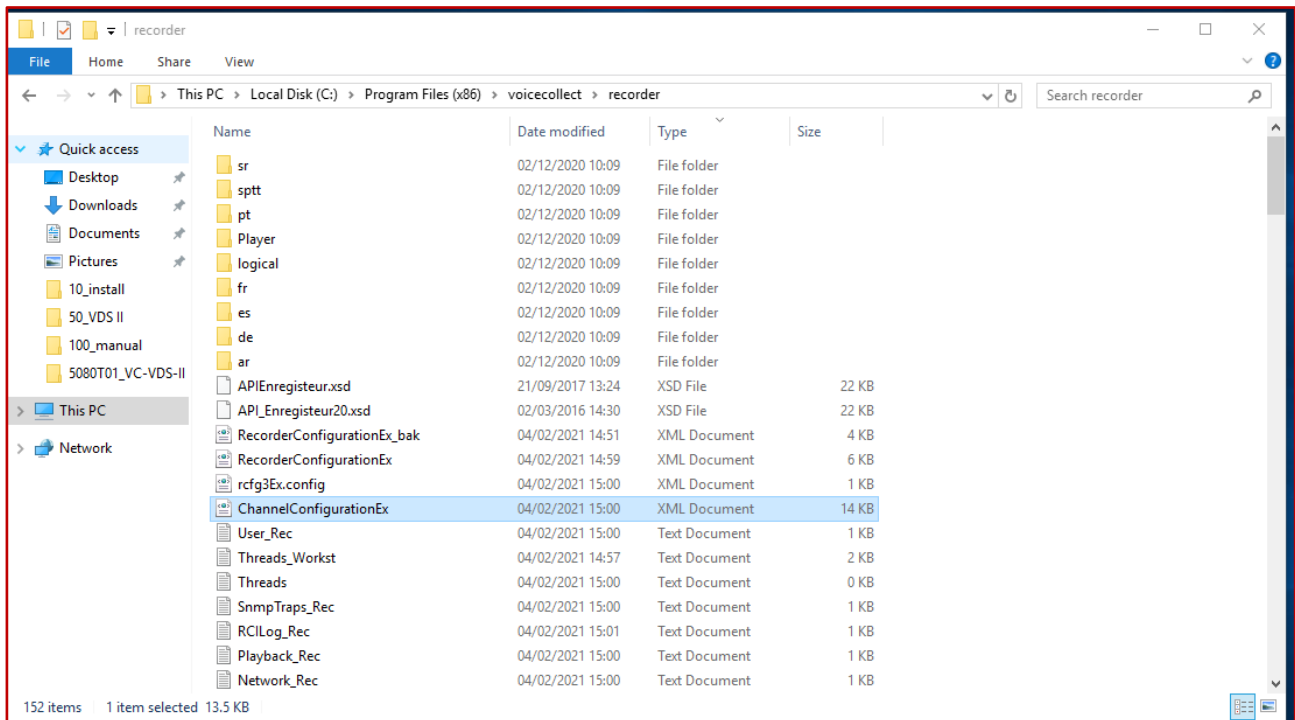
Enter IP address and press the button „Connect“

After a few seconds you have to enter the number of channels.

Click „Register“, then click Close and ok, the configurator will close.

6. Reload VC-MDx Recorder settings.

Check your Back-Up on the external media, select and copy the file *ChannelConfigurationEx.xml*
Open Explorer in the new Recorder and paste (overwrite) the file *ChannelConfigurationEx.xml* into the recorder setup folder: *C:\programfiles\voicecollect\recorder*



Now you can start the VC-MDx application in the new Recorder.

Select *Start > All Programs > VoiceCollect > VC-MDx Recorder* or use the desktop shortcut **VC-MDx Recorder**.



End of Document