

How to setup additional SATA Interface Board

Date: 09.06.2022

Table of Contents

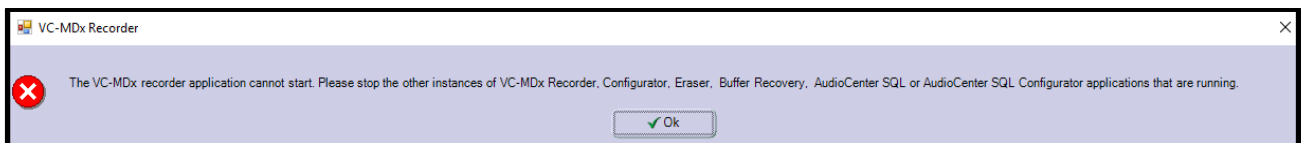
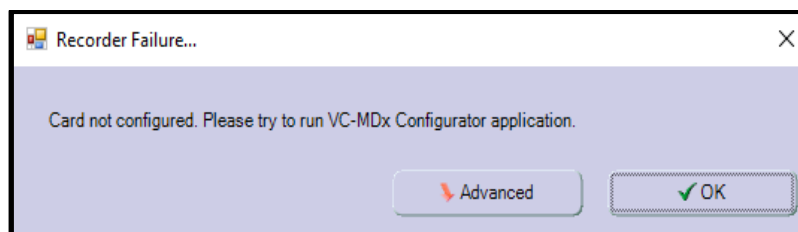
1 Task	3
2 Attention.....	3
3 ToDo	4

1 Task

When using several components that have a SATA interface, it may be necessary to install an additional SATA interface card

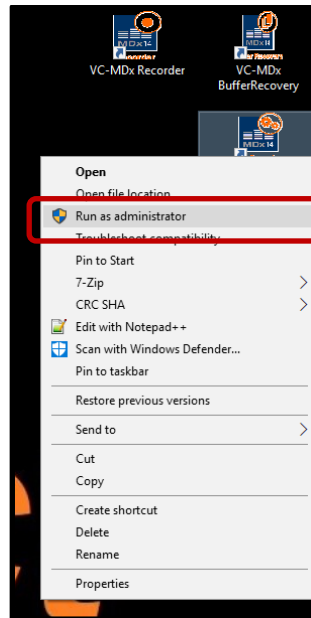
2 Attention

If the VC-MDx recorder software and input cards are already installed, the following messages may appear when you start the VC-MDx application.



3 ToDo

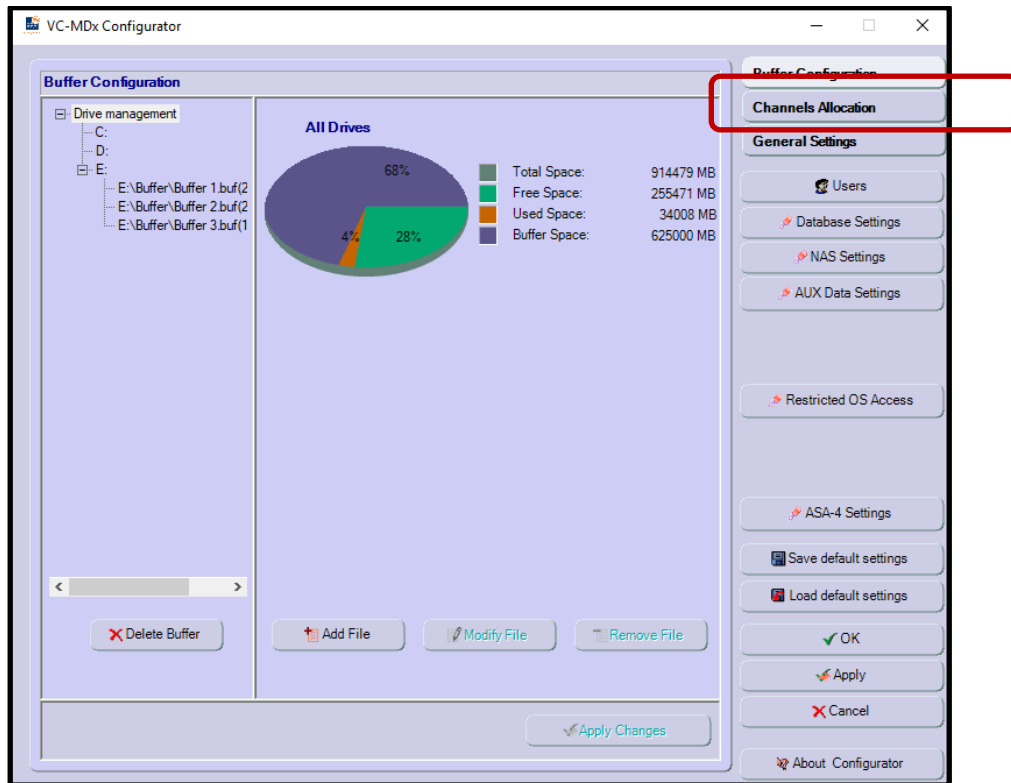
Run the VC-MDx Configurator as Administrator



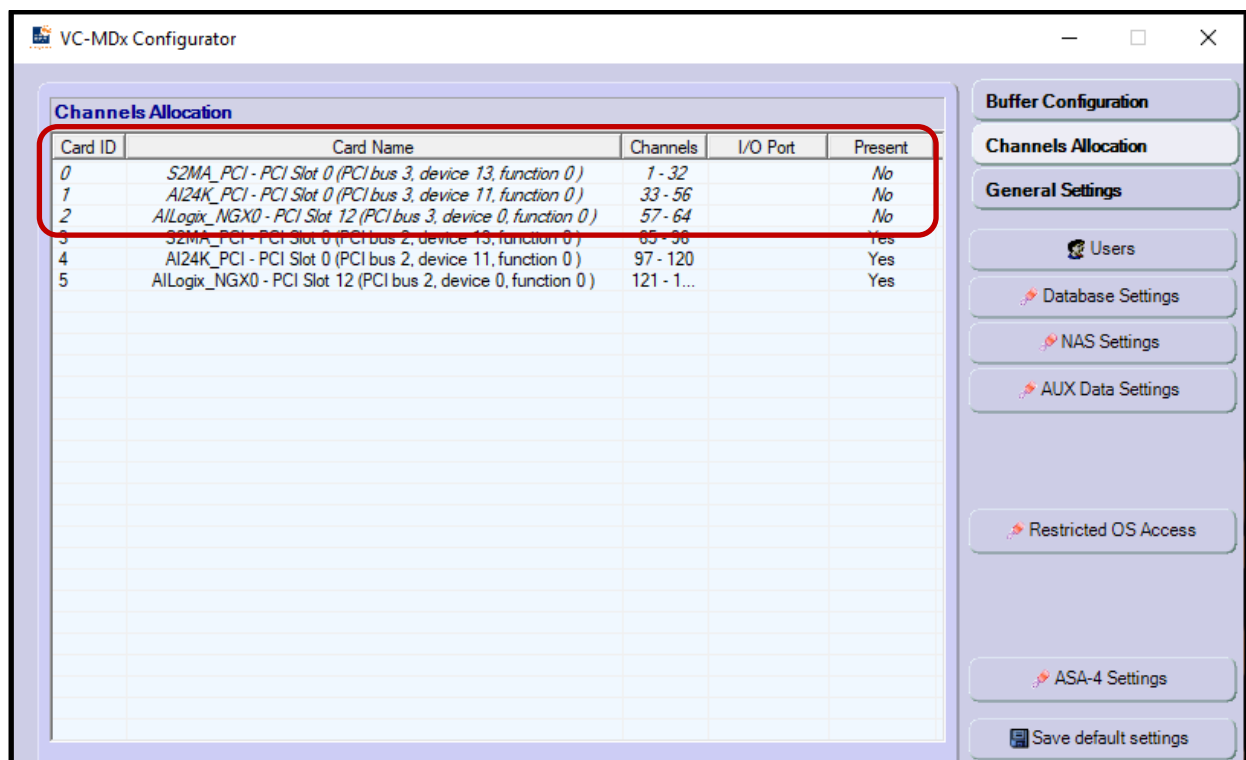
Start the VC-MDx Configurator and Log-In



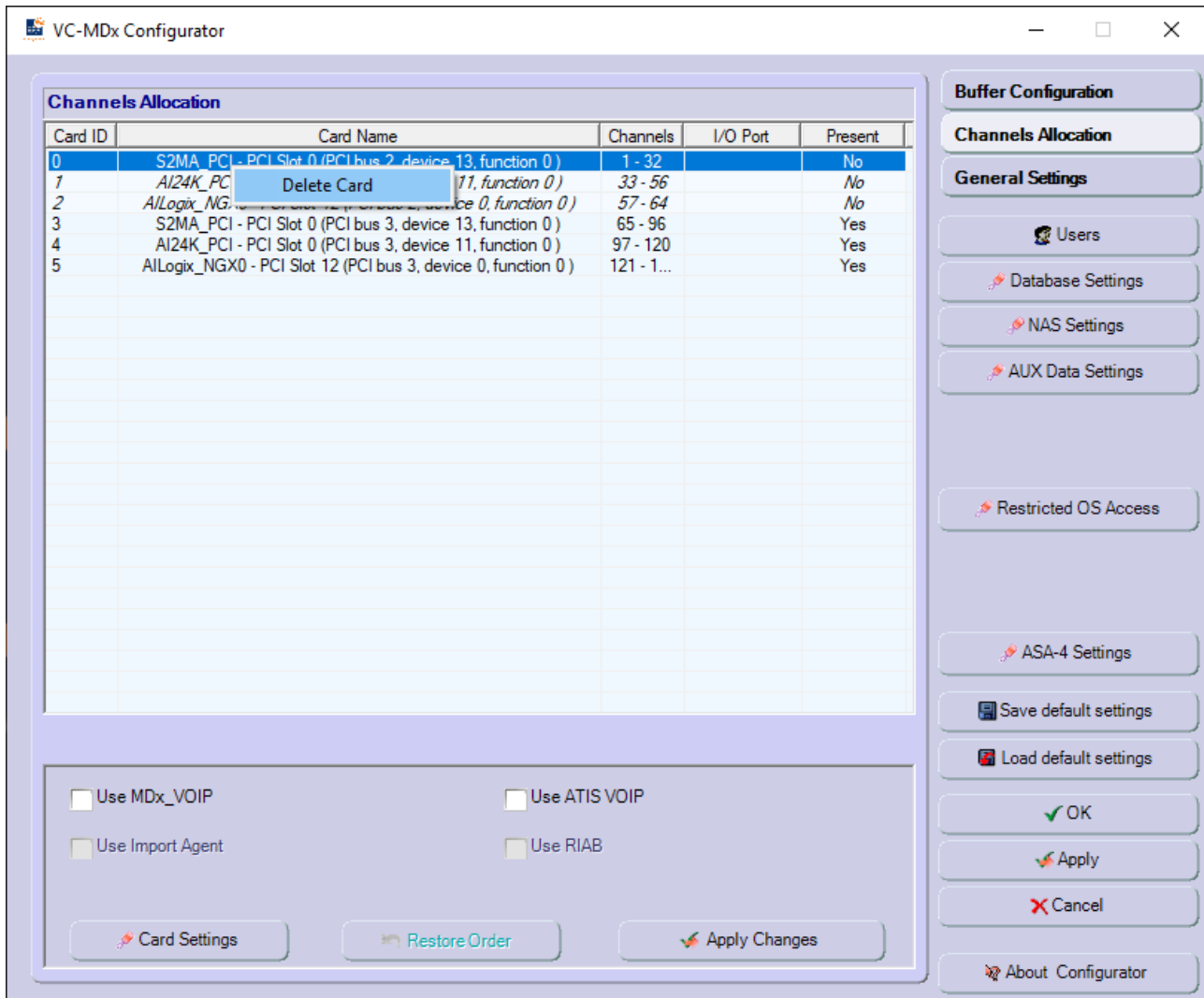
Click **Channels Allocation**



The cards, which are shown as “not present” (cursiv), must be deleted.



Right click on the relevant card and press **Delete Card**



Click **Apply** and **OK** → Configurator will close.
Start VC-MDx Recorder application and Log-In

→ Application must start now properly

*** End of Document ***