

# Manual

## VC-MDx

# Configurator

2022-08

### **General**

VC-MDx is voice recording software owned by VoiceCollect GmbH Germany. This software is designed to record calls in security environments according to the applicable laws of the country. VoiceCollect GmbH is not responsible for fraudulent use resulting from the original working conditions or existing laws. Please regard this manual as a general document aiming to provide a basic understanding of the installation. The file names, folders and versions mentioned may differ and may have to be adjusted according to the system supplied.

### **Copyright**

The VC-MDx Recorder devices, its software, and this instruction manual are protected by copyright.

The VC-MDx Recorder software is granted exclusively according to the T&C of VoiceCollect GmbH, subject to an explicit written and signed deviating contractual agreement between the parties.

This instruction manual may not be made accessible to third parties either in whole or in part, without the explicit permission of VoiceCollect GmbH. The reprinting or a reproduction in any possible form, whether photo-mechanical, print-technical, on any data carrier or even in translated form is permitted only after a written consent of VoiceCollect GmbH.

The reproduction of the VC-MDX Recorder devices and components without permission or the unauthorized reproduction of its software is punishable under civil and criminal law.

Technical modifications of the devices, modifications of the software or changes in these instructions for use are prohibited unless explicitly approved in writing beforehand by VoiceCollect GmbH.

### **Warranty, Liability**

The warranty and liability regarding the VC-MDx Recorder and its software is granted exclusively according to the T&C of VoiceCollect GmbH, subject to an explicit written and signed deviating contractual agreement between the parties.

The VC-MDx Recorder and its software have the technical characteristics according to the specification in the order confirmation and related order documentation of VoiceCollect GmbH. Features and specifications not shown in such official documentation and confirmed by VoiceCollect GmbH are not provided.

At any time the VC-MDx Recorder and its software shall be operated in full accordance with this manual. If the VC-MDx Recorder and its software are operated otherwise or by inadequately trained persons or are run in environments for which it is not suitable or which do not correspond to the state-of-the-art technology, then VoiceCollect GmbH and its subsidiaries are not responsible for any consequences.

Changes or modifications which are not explicitly approved in writing beforehand by VoiceCollect GmbH can result in the warranty becoming null and void. VoiceCollect GmbH does not assume any responsibility for any accessories not delivered or certified by VoiceCollect GmbH.

### **Brands**

The logos and the brand *VoiceCollect* is protected by copyright and other intellectual property law and are the property of the company VoiceCollect GmbH or its affiliated companies. All other logos and brands are the logos and brands of the respective owners and are subject in general to protection under trademark, patent or other intellectual property laws. Such laws must be fully respected when operating and using the VC-MDx Recorder and its software.



## Document History

Version	Date	Author	Remarks
1.0	01.08.2022	MR / PE	Basic version based on 14.4.x.x

## Content Overview

<b>VC-MDx Configurator application</b>	<b>5</b>
<b>Start the Configurator application</b>	<b>7</b>
<b>Configurator Main Window</b>	<b>8</b>
<b>Define Buffer File</b>	<b>9</b>
<b>Activating Channel Cards</b>	<b>16</b>
<b>Define General Settings</b>	<b>19</b>
<b>Define User Login</b>	<b>21</b>
<b>Define Database Settings</b>	<b>24</b>
<b>Define NAS Archiving</b>	<b>26</b>
<b>Define Equalization</b>	<b>28</b>
<b>Define Additional Settings</b>	<b>30</b>
<b>Save and Load Configurations</b>	<b>36</b>
<b><u>Information</u></b>	<b>41</b>

# VC-MDx Configurator application

The main functions of the software are:

- **Buffer management**
- **Channels allocation and setting**
- **NAS and Deck archiving setting**
- **Equalization setting**
- **SNMP setting**

Note: Recorder application can't be opened during Configurator application running



# Start the Configurator application

- Select **Start > All Programs > VoiceCollect > VC-MDx Configurator**, Or
- Double-click on the icon in the desktop named **“VC-MDx Configurator”**

A screenshot of the 'Configurator' application window. The window has a title bar with the text 'Configurator' and a close button. The main area contains three input fields: 'Language' with a dropdown menu set to 'English', 'User name' with the text 'Super', and 'Password' with a masked password of six dots. At the bottom, there are two buttons: 'OK' with a green checkmark and 'Cancel' with a red 'X'.

Use the following data for the first logon to the system:

Category	Authentication
User name	Super
Password	Super

# Configurator Main Window

The screenshot shows the VC-MDx Configurator main window. The window title bar is labeled '1'. The 'Drive management' section on the left is labeled '2'. A pie chart showing drive space usage is labeled '3'. The right-hand settings sidebar is labeled '4'.

**Drive Space Information:**

Category	Percentage	Value
Total Space		156601 MB
Free Space		83443 MB
Used Space	47%	73157 MB
Buffer Space		0 MB

1. Title bar
2. Drive Management partition
3. Drives space information
4. Selection Settings function





# Define Buffer File

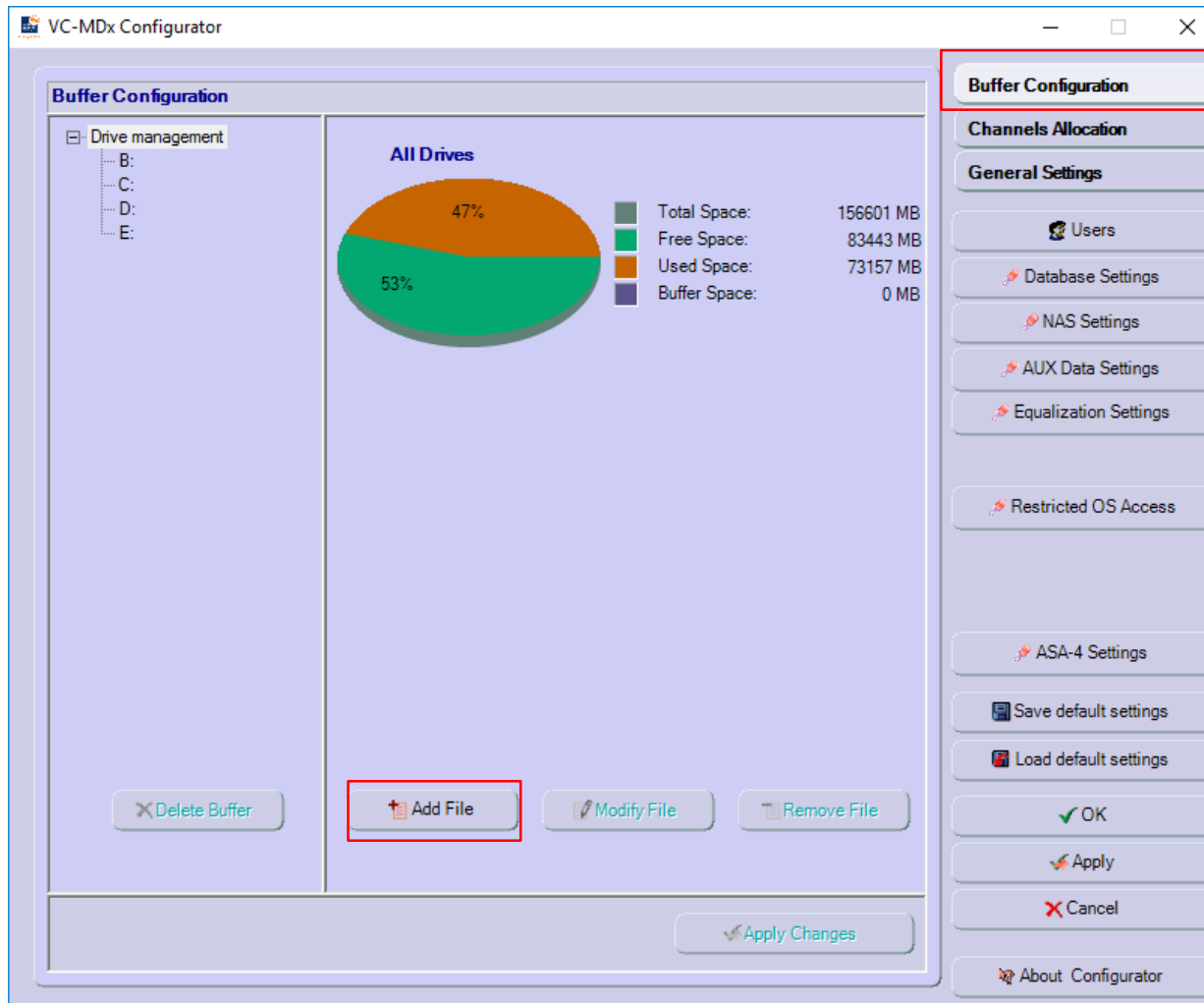
## Create New Buffer

Using the VC-MDx Recorder you can record calls on a hard disk buffer (Instant Record Buffer) in order to investigate them later on.

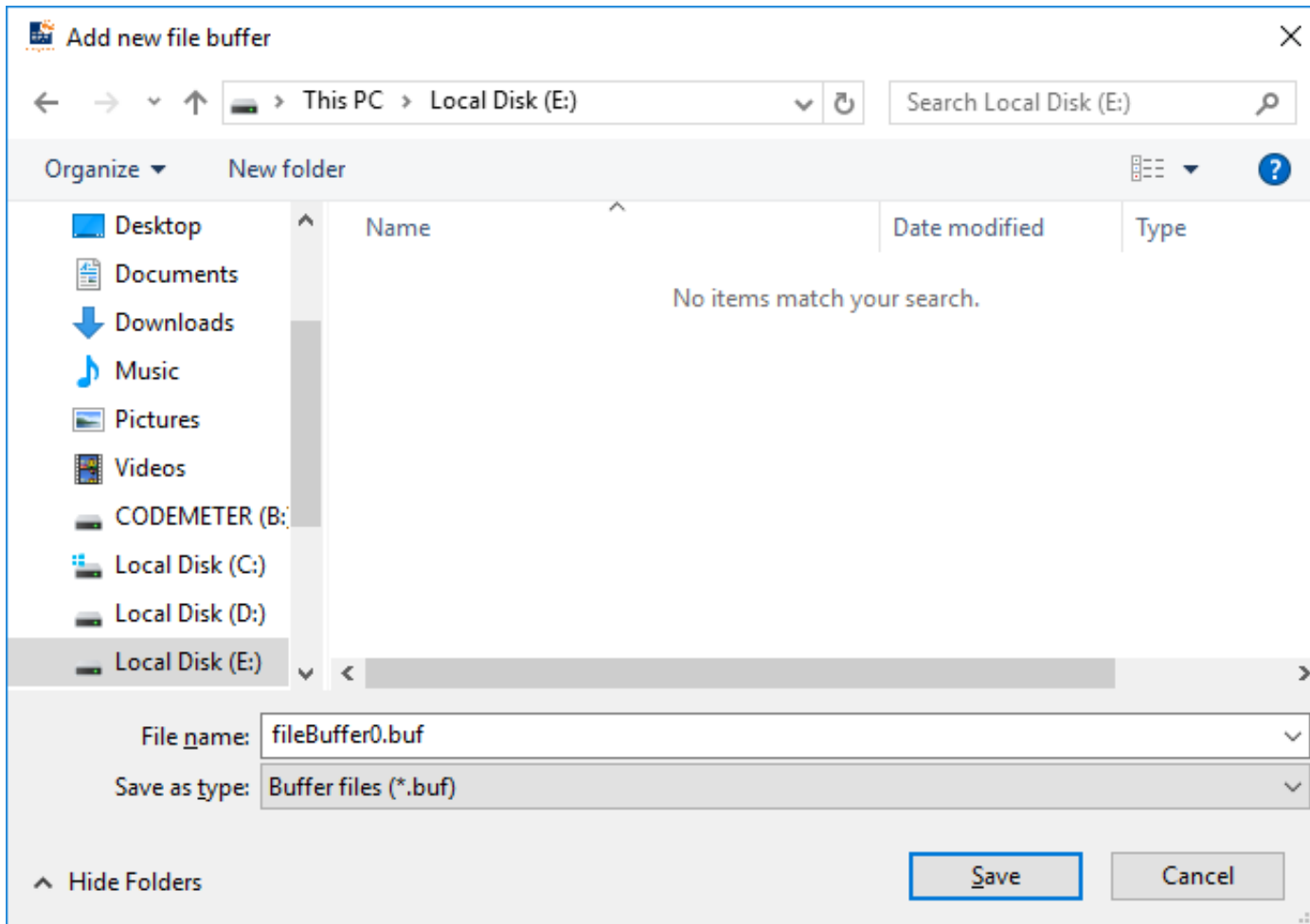
All recordings are written to the hard disk buffer and made digitally in ring memory mode in the hard disk buffer (IR buffer) of the recorder.

The data is stored in ring memory mode that is in the normal case the oldest recordings are overwritten by new ones as soon as the hard disk buffer is full.

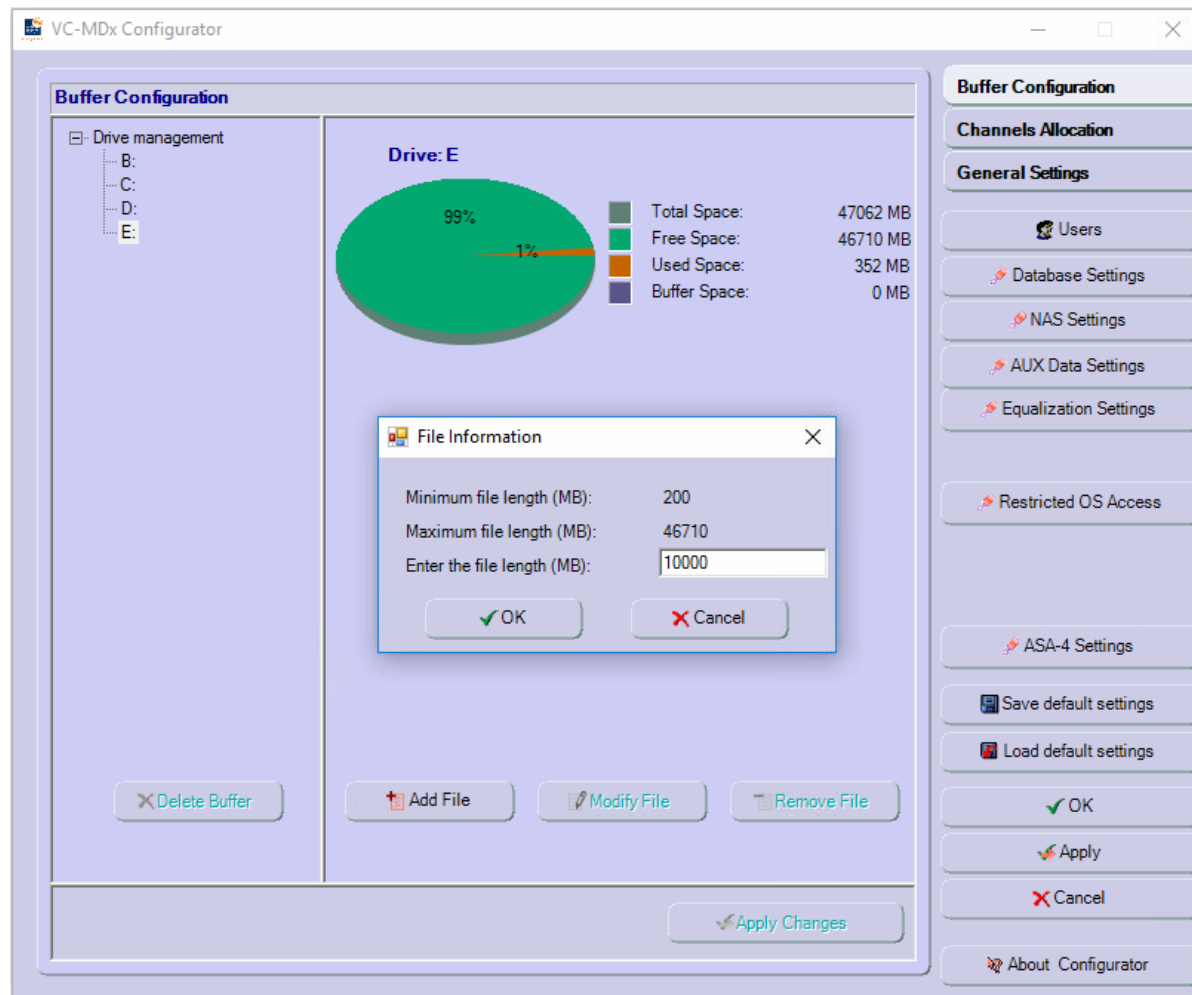




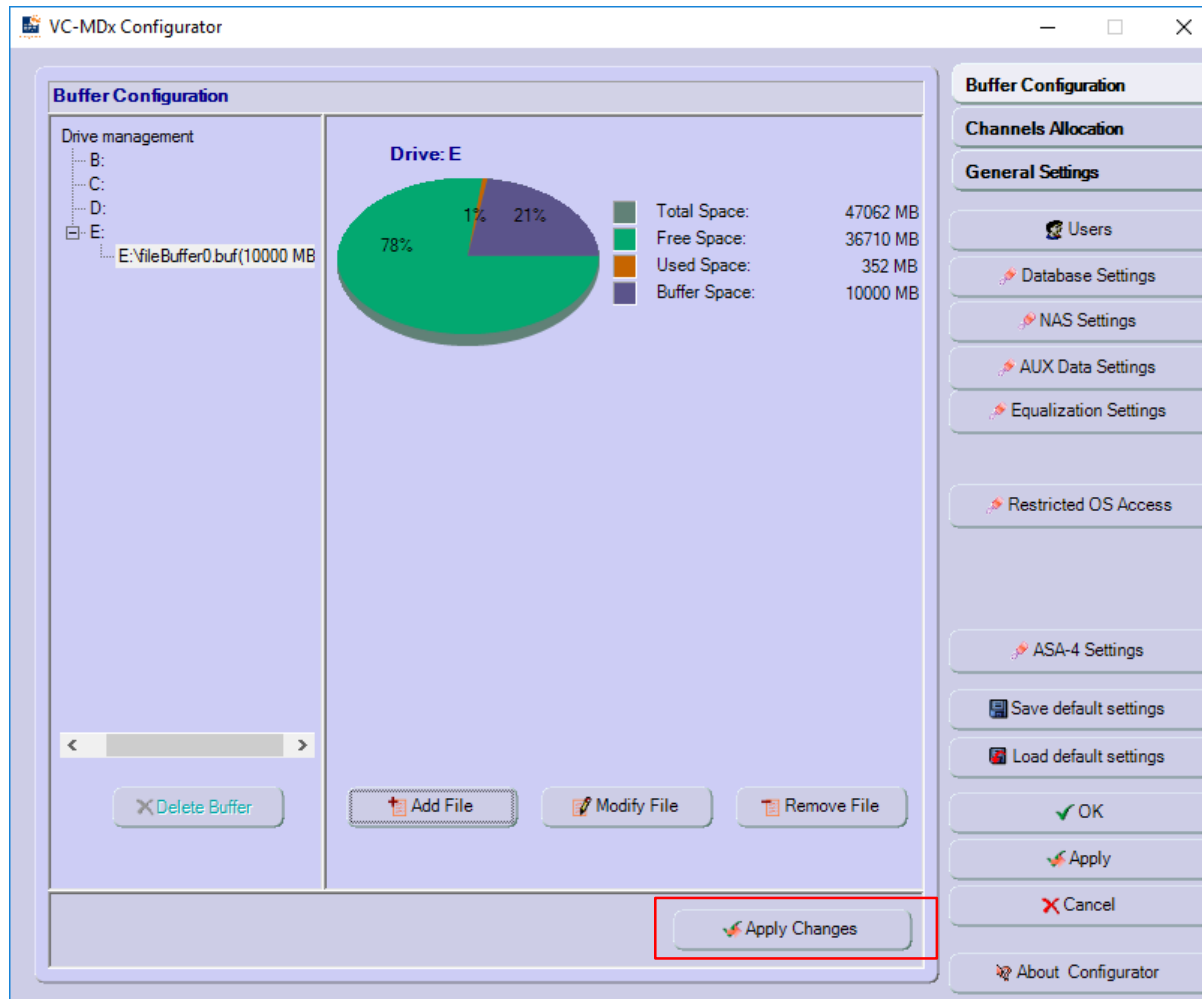
1. Select **Buffer Configuration** function
2. Click **Add File** button.



3. Select “E” Drive for buffer file location stored, then Click **Save**.



4. Insert for buffer size (e.g. **10000 MB**), then click **OK** to exit from **File Information** box.



5. Click **“Apply Changes”** to confirm create buffer file.

**VC-MDx Configurator**

**Buffer Configuration**

Drive management

- B:
- C:
- D:
- E:**

E:\fileBuffer0.buf(10000 MB)  
E:\fileBuffer1.buf(10000 MB)  
E:\fileBuffer2.buf(10000 MB)  
E:\fileBuffer3.buf(10000 MB)  
E:\fileBuffer4.buf(6000 MB)

**Drive: E**

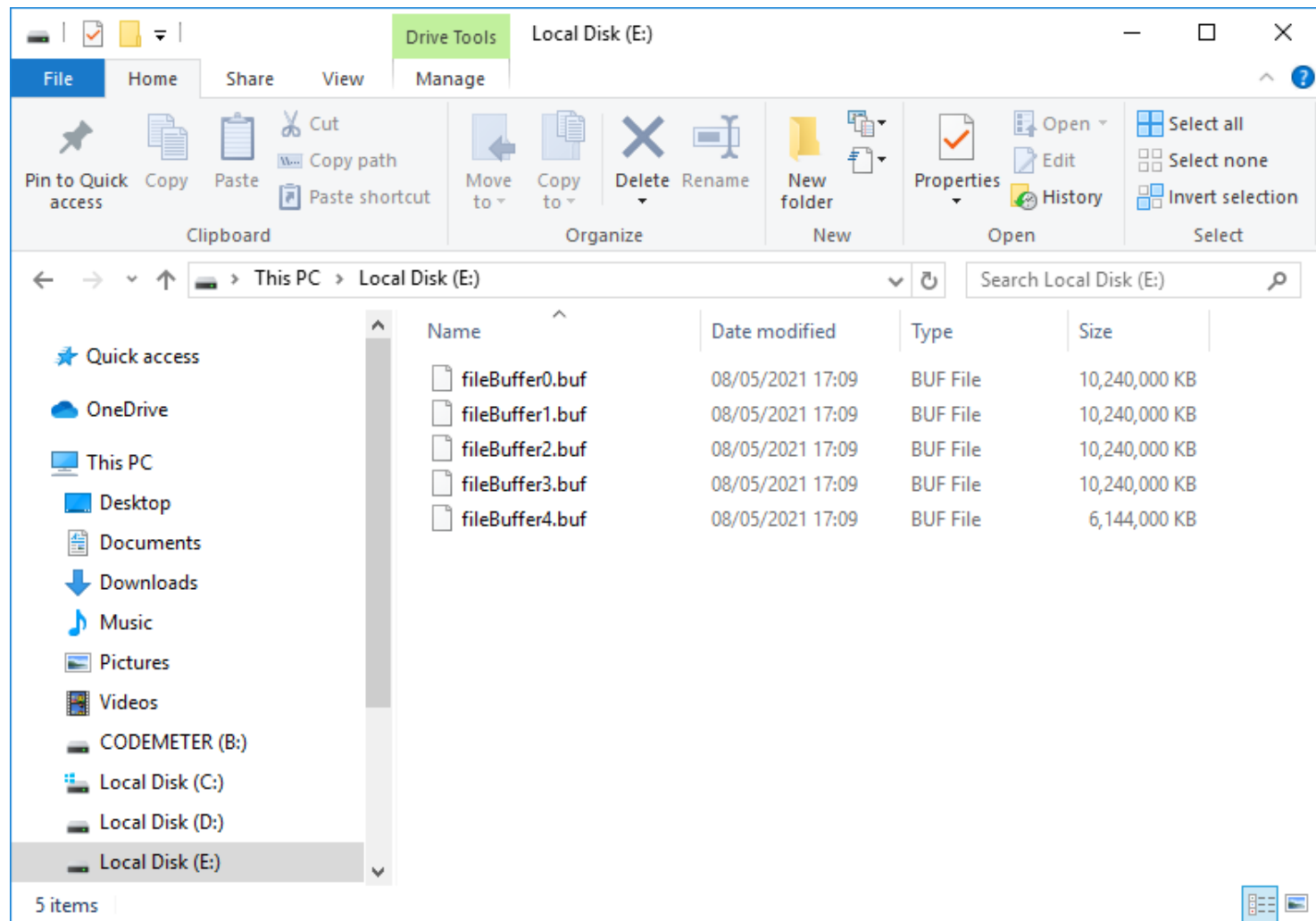
98%  
2%

Total Space:	47062 MB
Free Space:	710 MB
Used Space:	352 MB
Buffer Space:	46000 MB

Buttons: Delete Buffer, Add File, Modify File, Remove File, Apply Changes

Right sidebar buttons: Buffer Configuration, Channels Allocation, General Settings, Users, Database Settings, NAS Settings, AUX Data Settings, Equalization Settings, Restricted OS Access, ASA-4 Settings, Save default settings, Load default settings, OK, Apply, Cancel, About Configurator

- ✓ Repeat step 1 to 5 to add another buffer file and leave 2 - 5% of free space in the partition



✓ The buffer files which have been created and located at "E" drive.

# Activating Channel Cards

## Set Channels Allocation

All the installed interface cards appear in the list.

The assigned line is shown in grey and italic if a card is not ready or has been temporarily removed.





The screenshot displays the VC-MDx Configurator application window. The main area features a table titled "Channels Allocation" with the following data:

Card ID	Card Name	Channels	I/O Port	Present
0	AJ24K_PCI - PCI Slot 0 (PCI bus 5, device 3, function 0)	1 - 16		Yes
1	S2MA_PCI - PCI Slot 0 (PCI bus 5, device 2, function 0)	17 - 48		Yes
2	AlLogix_NGXD - PCI Slot 1 (PCI bus 5, device 0, function 0)	49 - 56		Yes
3	ATIS_VOIP 10.10.10.12	57 - 65		Yes
4	ATIS_VOIP 10.10.10.112	66 - 72		Yes

Below the table, there are several configuration options:

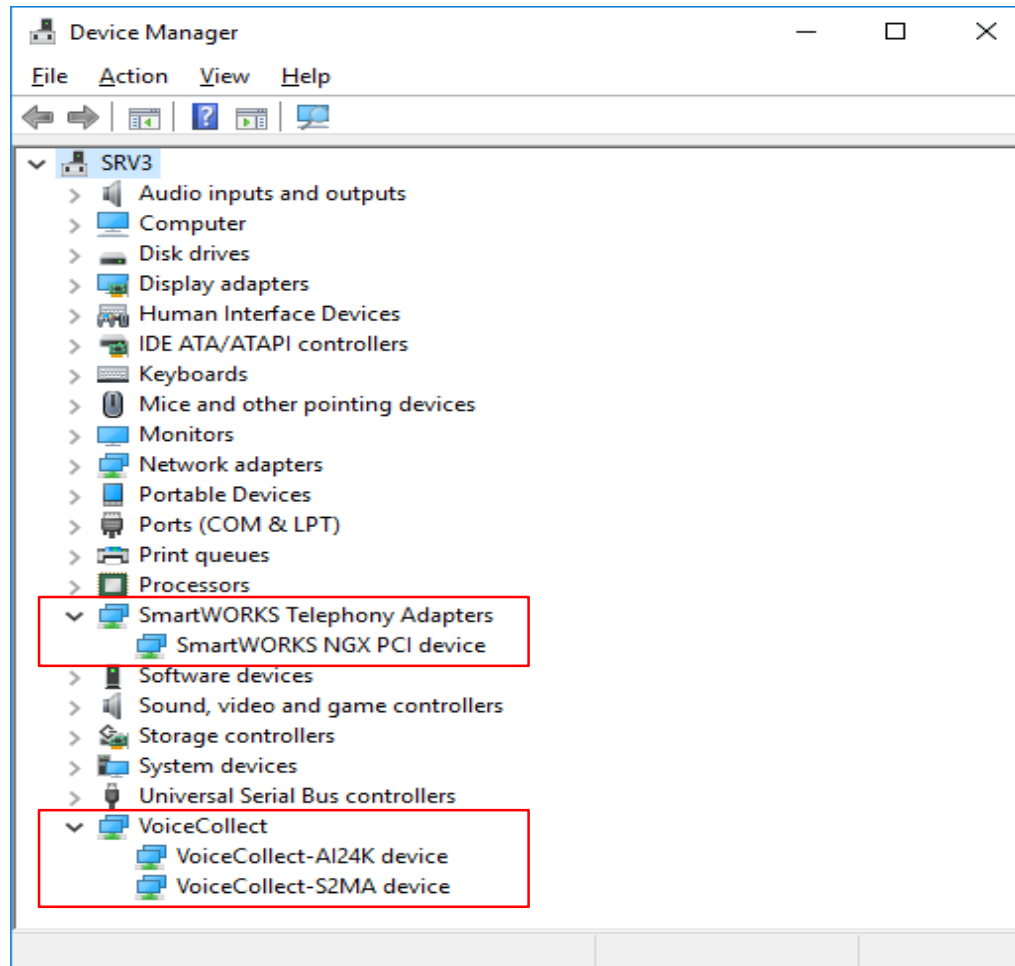
- Use MDx\_VOIP
- Use ATIS VOIP
- Use Import Agent
- Use RIAB

Buttons at the bottom of the main area include "Card Settings", "Restore Order", and "Apply Changes".

The right sidebar contains a vertical menu of settings categories:

- Buffer Configuration
- Channels Allocation
- General Settings
  - Users
  - Database Settings
  - NAS Settings
  - AUX Data Settings
  - Equalization Settings
  - Restricted OS Access
  - ASA-4 Settings
  - Save default settings
  - Load default settings
  - OK
  - Apply
  - Cancel
  - About Configurator

✓ The card ID assigned to a card is determined by the position of the card in the list.



- ✓ The cards and card drivers have been installed and recognized properly at **Device Manager**.

# Define General Settings

## ❑ Set General Settings

General setting is intended to set following:

- Coding Law selection.
- External Contacts selection mode.
- Memory address selection.
- Deck recording mode (**Automatic** / **Copy** mode).
- Recorder application running as background service.
- Activate / deactivate SNMP feature.
- Automatic export recording via FTP feature.
- CAD and SARP function (depends on the options activated in the dongle).



**VC-MDx Configurator**

**General Settings**

Coding Law  
 A Law  
  $\mu$  Law

External Contacts  
 Opener  
 Closer

Deck recording mode  
 Automatic  
 Copy

Computer Aided Dispatch  
 Enable CAD  
 VCP  
 VCP XML  
 ILP  
 LLP  
 Enable play on VCP

IP Address:  Port:

Serial number:

WIN OS Language  
 Run as Windows Service

SNMP  
 Enable SNMP

FTP Settings  
URI:   
User name:   
Password:   
No of tries:  Retrial delay timer:

SARP  
 Enable SARP SARP IP:  UDP Port:  Timeout:  Seconds

**Apply Changes**

Buffer Configuration  
Channels Allocation  
**General Settings**  
Users  
Database Settings  
NAS Settings  
AUX Data Settings  
Equalization Settings  
Restricted OS Access  
ASA-4 Settings  
Save default settings  
Load default settings  
OK  
Apply  
Cancel  
About Configurator

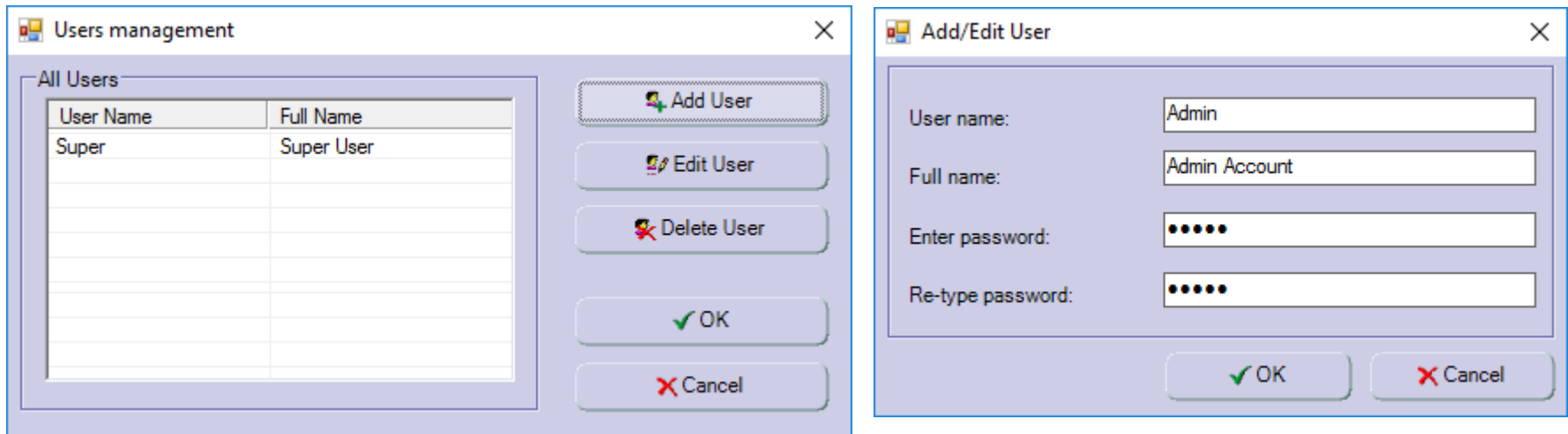
- ✓ Modify the options according to your requirements, then click **“Apply Changes”** to confirm setting.

# Define User Login

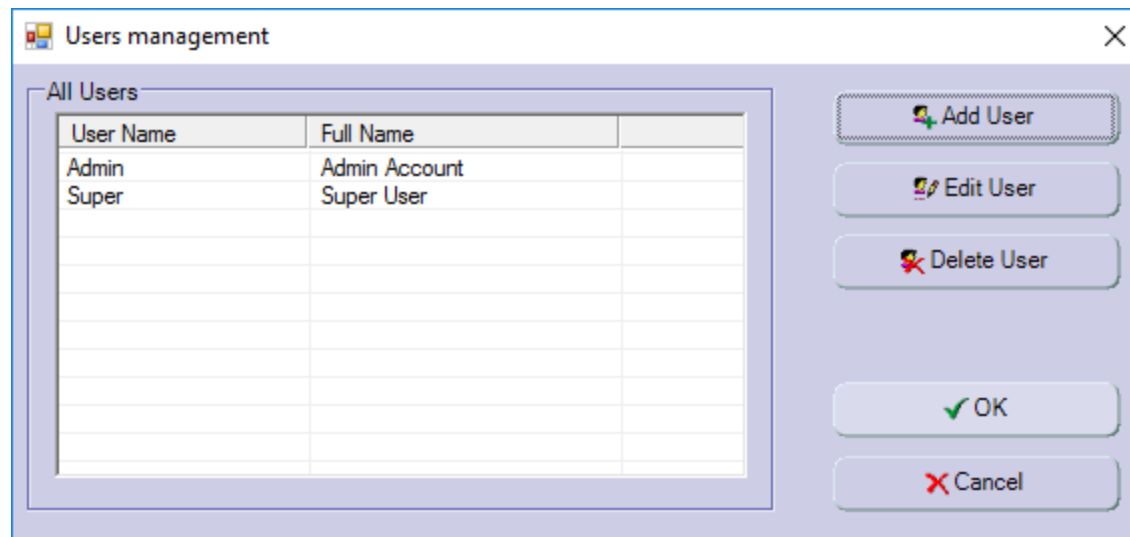
## Set User Login

It is intended to protect the software from unauthorized access or to change the user.





1. From Main Window, select **“Users”**.
2. Click **Add User**.
3. Insert username and password at **Add/Edit User** box.



4. Click **OK** to close from **Users Management** box.

**While you create a new user (automatically with full rights), the default user (Super) will be automatically deleted and there is no solution to recover it later.**

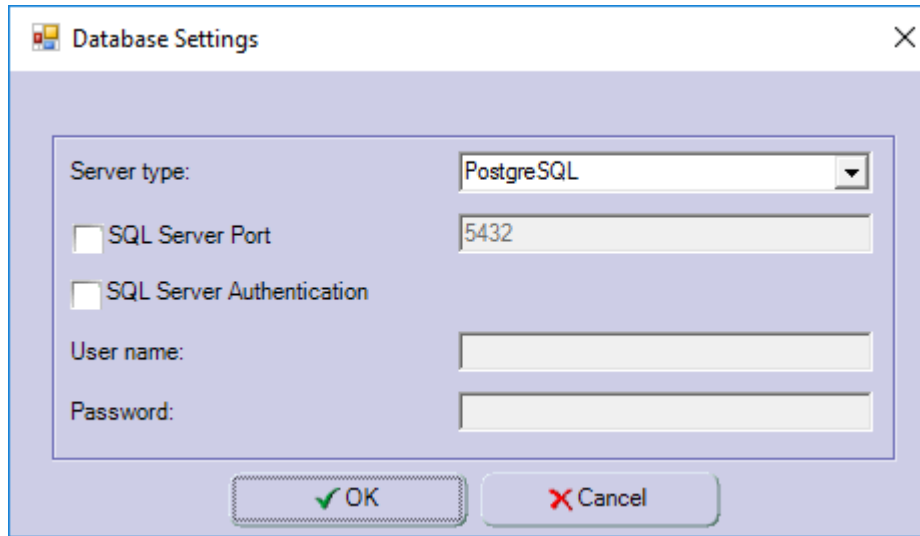
# Define Database Settings

## Set Database Settings

It is intended to select the server database where CRD (*Call Record Data*) from Recorder application will be stored.







Database Settings

Server type: PostgreSQL

SQL Server Port 5432

SQL Server Authentication

User name:

Password:

OK Cancel

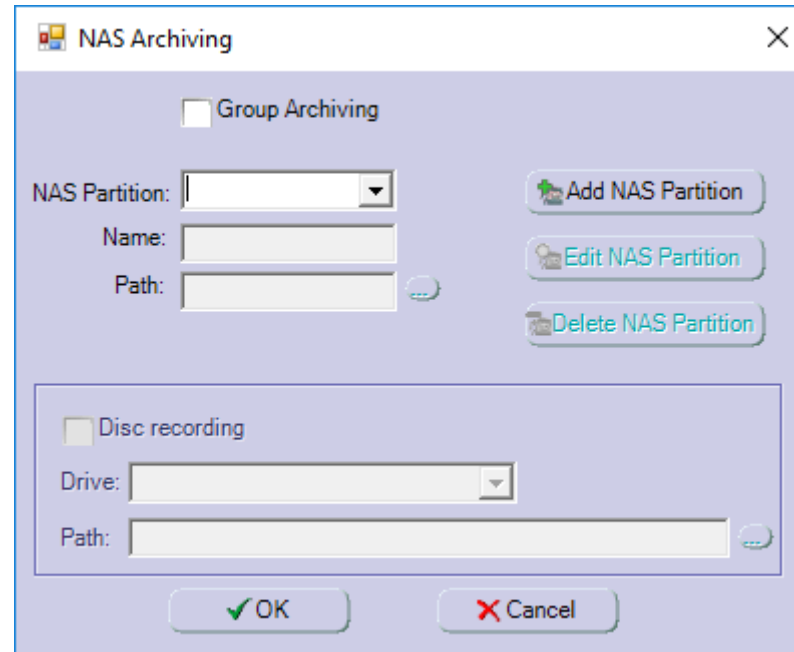
1. From Main Window, select “**Database Settings**”.
2. In the **Database Settings** window , select “**PostgreSQL**” for Server type.
3. Keep uncheck and empty for the rest settings on Database Settings window.

# Define NAS Archiving

## Set NAS Archiving

NAS Archiving is namely copying the IR buffer to the external disk storage and is carried out parallel to the recording.





1. From Main Window, select **“NAS Settings”**.
2. In the **NAS Settings** window , select **“Add NAS Partition”** to create a new NAS archiving storage.

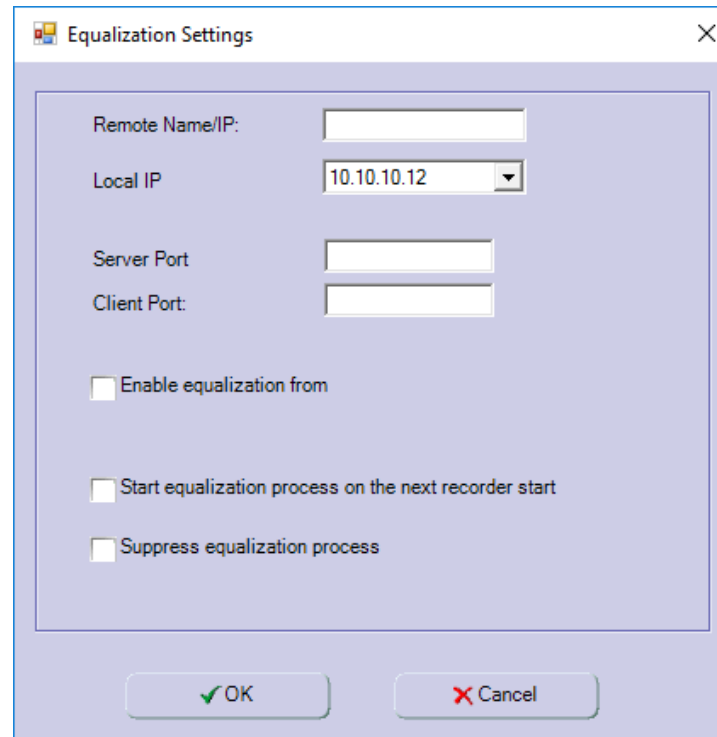
For the further setting of NAS Archiving can refer to its manual guide.

# Define Equalization

## Set Equalization Settings

It is a feature that provides full redundancy by maintaining identical stored data on the redundant recording system.





Equalization Settings

Remote Name/IP:

Local IP:

Server Port:

Client Port:

Enable equalization from

Start equalization process on the next recorder start

Suppress equalization process

1. From Main Window, select “**Equalization Settings**”.
2. In the **Equalization Settings** window , insert IP and port for local and remote recorder.

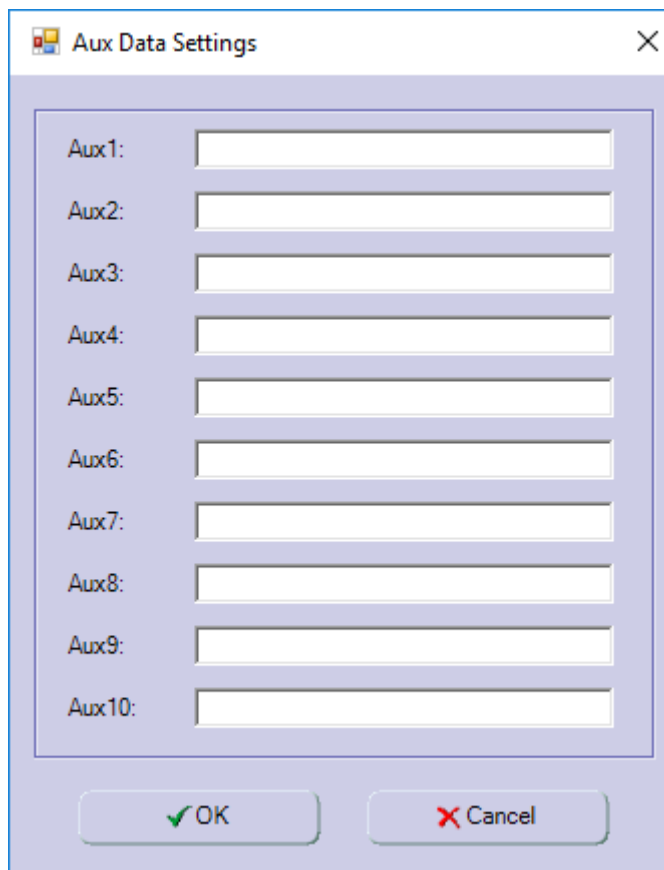
For the further setting of Equalization can refers to its manual guide.

# Define Additional Settings

## Aux Data Settings

It is additional setting for CRD in the record list of Recorder application.





Aux Data Settings

Aux1:

Aux2:

Aux3:

Aux4:

Aux5:

Aux6:

Aux7:

Aux8:

Aux9:

Aux10:

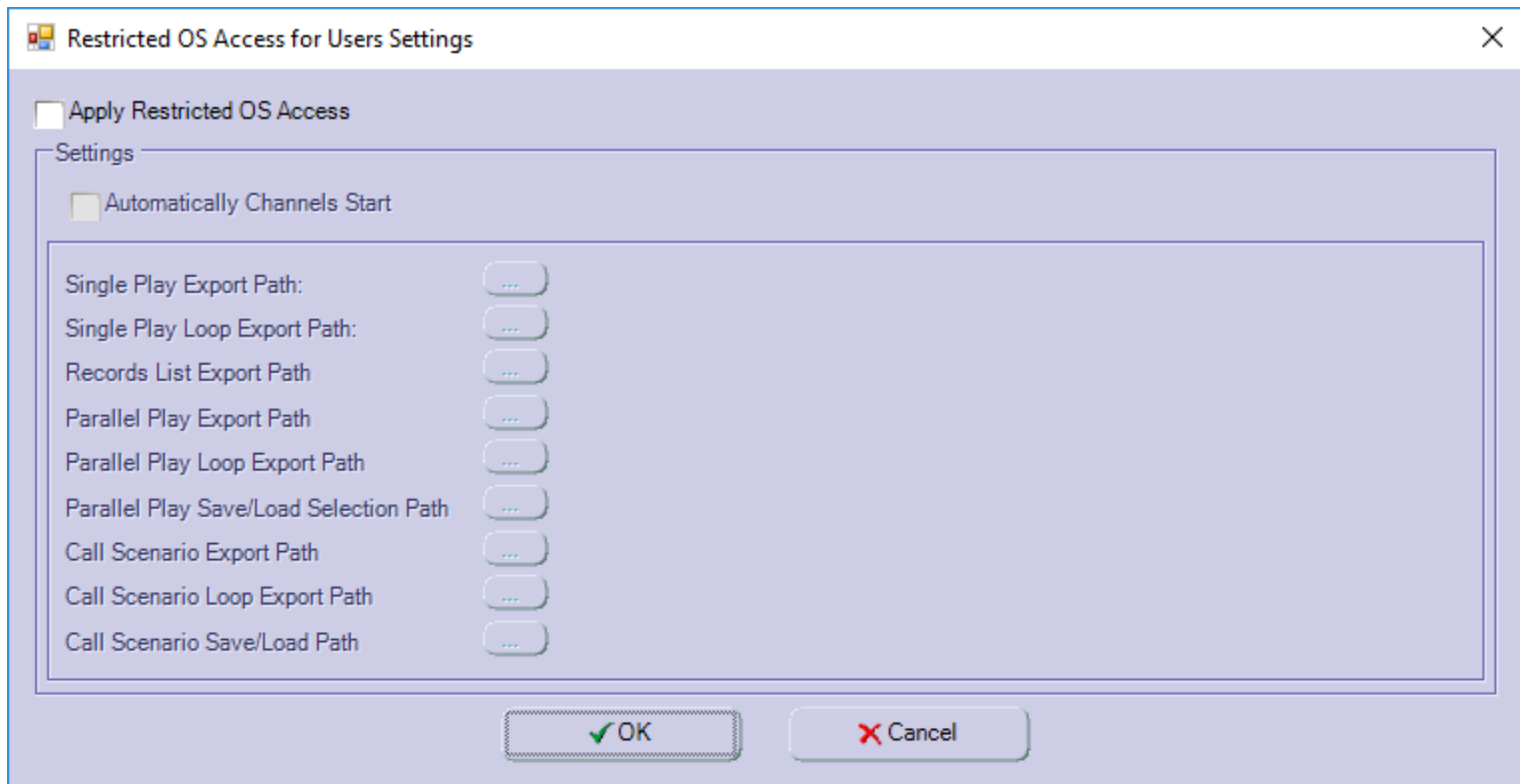
✓ OK      ✗ Cancel

1. From Main Window, select “**AUX Data Settings**”.
2. In the **Aux Data Settings** window , can be insert for additional data CRD

### **Restricted OS Access Settings**

It is intended to restrict the access setting for user account.

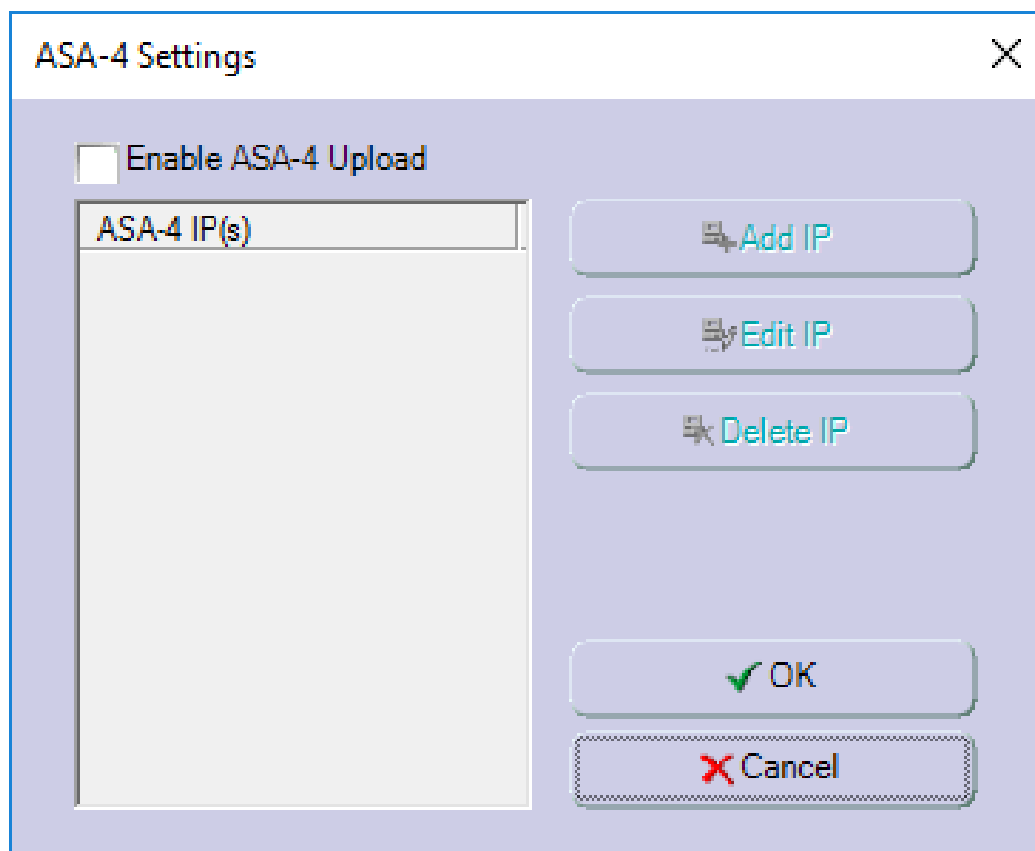




1. From Main Window, select “**Restricted OS Access**”.
2. Modify the options according to your requirements, then click “**OK**” to confirm setting.

### **ASA-4 Settings**

It is intended to integrate with ASA-4 device.



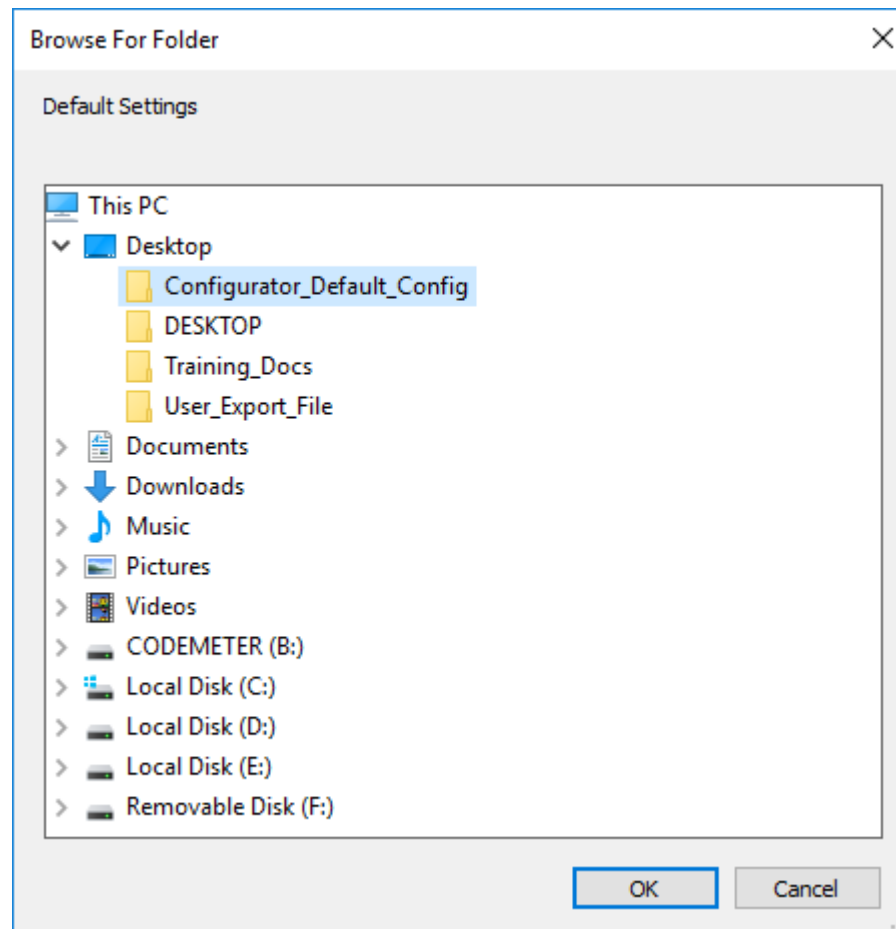
1. From Main Window, select **“ASA-4 Settings”**.
2. In the **ASA-4 Settings** window , insert IP for ASA-4 device then click **“OK”** to confirm setting.

# Save and Load Configurations

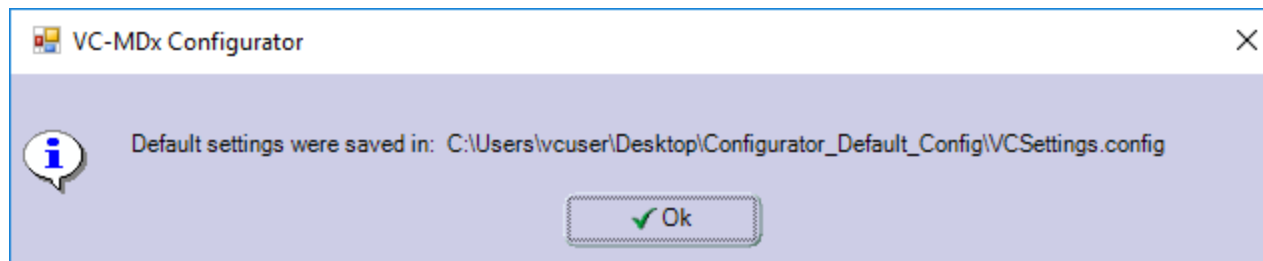
## Save Default Settings

You can save the configuration in a config file to reuse it later on.





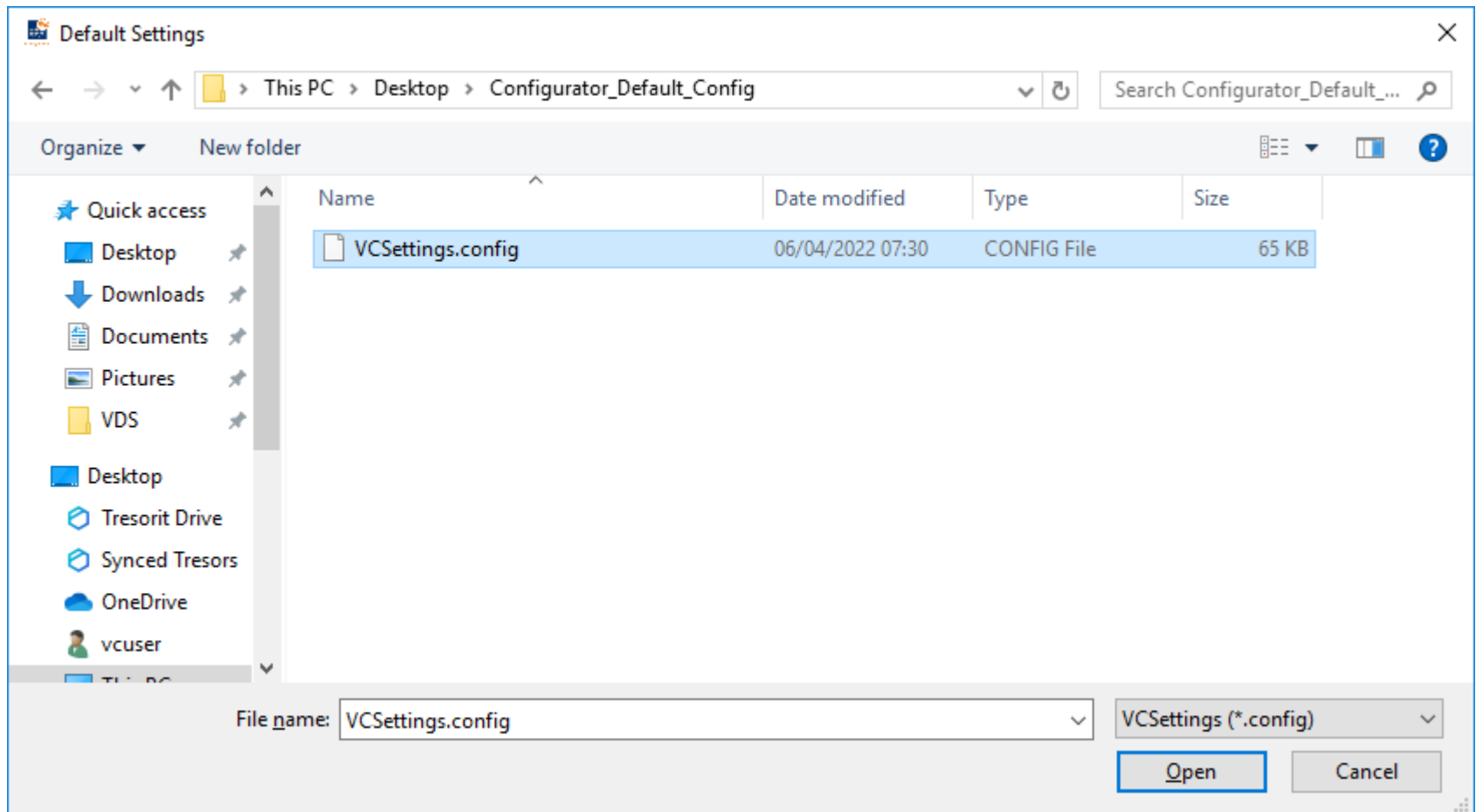
1. From Main Window, select **“Save default settings”**.
2. Define the path in the displayed dialog then click **“OK”** to confirm.



3. The information box displays and then click **Ok**.

### **Load Default Settings**

You can load the saved configuration to restore back the saved settings.



1. From Main Window, select **“Load default settings”**.
2. Select the saved config file in the displayed dialog then click **“Open”** to confirm.



# Information

VoiceCollect GmbH assumes no guarantee for the actuality, correctness, integrity or quality of the information provided in its manuals. VoiceCollect GmbH regularly checks and updates the content of the released manuals for consistency with the described hardware and software. Nevertheless, deviations cannot be excluded.

The General Terms and Conditions for the Supply and License of *VoiceCollect®* Recording Products (T&C) of VoiceCollect GmbH are in particular also applicable regarding the VC-MDx Recorder and its software. These T&C are accessible under [www.voicecollect.de](http://www.voicecollect.de).

In case of conflict the T&C shall prevail over this manual.

Further information is available from [voicecollect@voicecollect.de](mailto:voicecollect@voicecollect.de)