

Installation Instruction

WebLCR

Version: 2.0 dated 01.10.2020

Table of Content

1	Document History.....	3
2	Tomcat Installation	4
2.1	Install Java	4
2.2	Install Tomcat	4
3	Tomcat configuration	6
3.1	Change config files	6
3.2	Start Apache service automatically:.....	6
3.3	Increase memory	7
3.4	Check Tomcat startpage and manager.....	8
3.5	Check Logfiles:.....	8
4	WebLCR configuration	9
4.1	Configure path for native libraries	9
4.2	Fix of the “UnsatisfiedLinkError”.....	10
4.3	WebLCR Deployment	10
4.4	Prepare WebLCR config files	10
4.5	Manage WebLCR user.....	10
4.6	Adapt WebLCR system settings	10

1 Document History

Version		Changes
1.0	01.06.2013	Basic version
2.0	01.10.2020	VC Adaptation

2 Tomcat Installation

2.1 Install Java

<http://www.oracle.com/technetwork/java/javase/downloads/jdk7-downloads-1880260.html>

Java SE Development Kit 7u21 (or higher) for Windows **32bit / 64bit**.

Recommended: 64bit!

Don't use the proposed path (C:\Program Files (x86)\Java\jdk1.7.0_21\).

Instead use a path without version information (z.B. C:\Program Files (x86)\Java\jdk1.7).

So you are prepared to use future JDK Updates and will be easier to use.

2.2 Install Tomcat

<http://tomcat.apache.org/download-70.cgi>

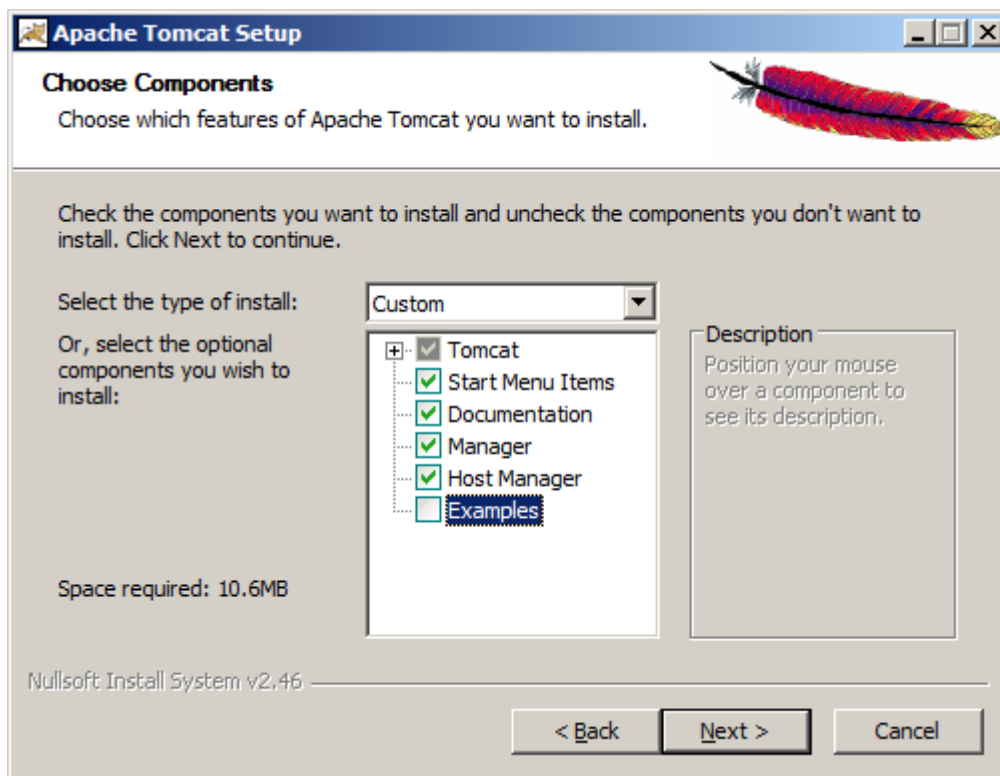
32-bit/64-bit Windows with Service Installer (7.0.40 or higher):

<http://www.eu.apache.org/dist/tomcat/tomcat-7/v7.0.40/bin/apache-tomcat-7.0.40.exe>

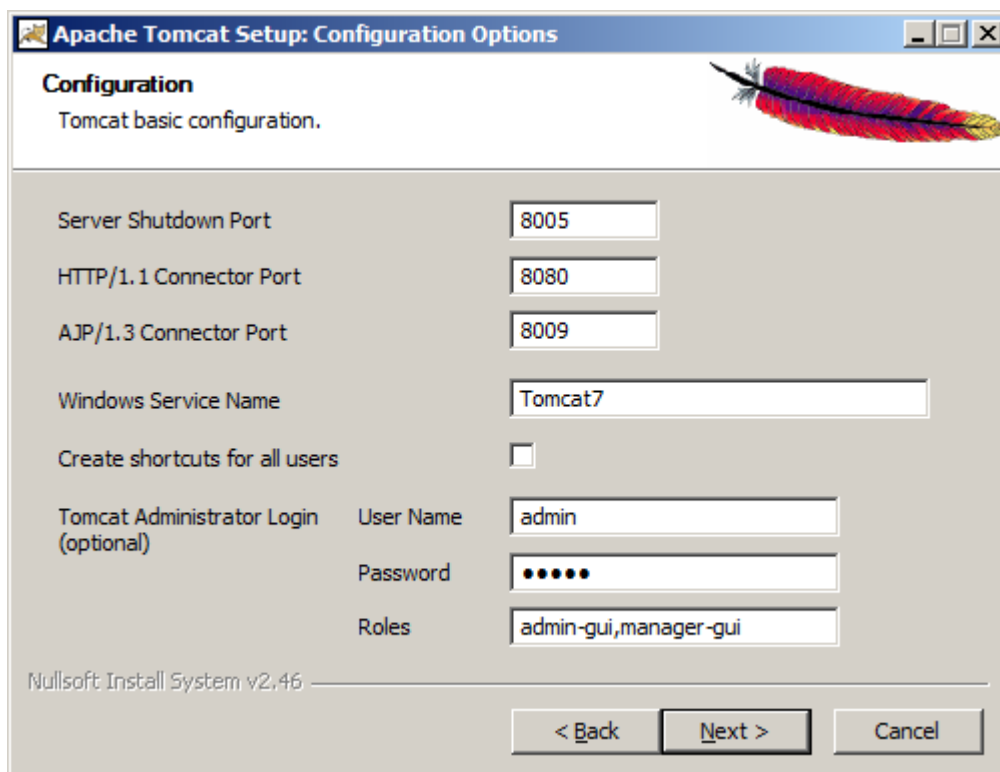
<http://tomcat.apache.org/tomcat-7.0-doc/setup.html>

Preparation:

Stop IIS and deactivate service. Please ensure that no application is using the standard http port 80/443.



(Select Host Manager)



Adaptation: Set HTTP Connector Port to “80”, define user for remote administration (admin/admin), add the Role „manager-script“

3 Tomcat configuration

3.1 Change config files

e.g. Port:

C:\Program Files\Apache Software Foundation\Tomcat 7.0\conf\server.xml

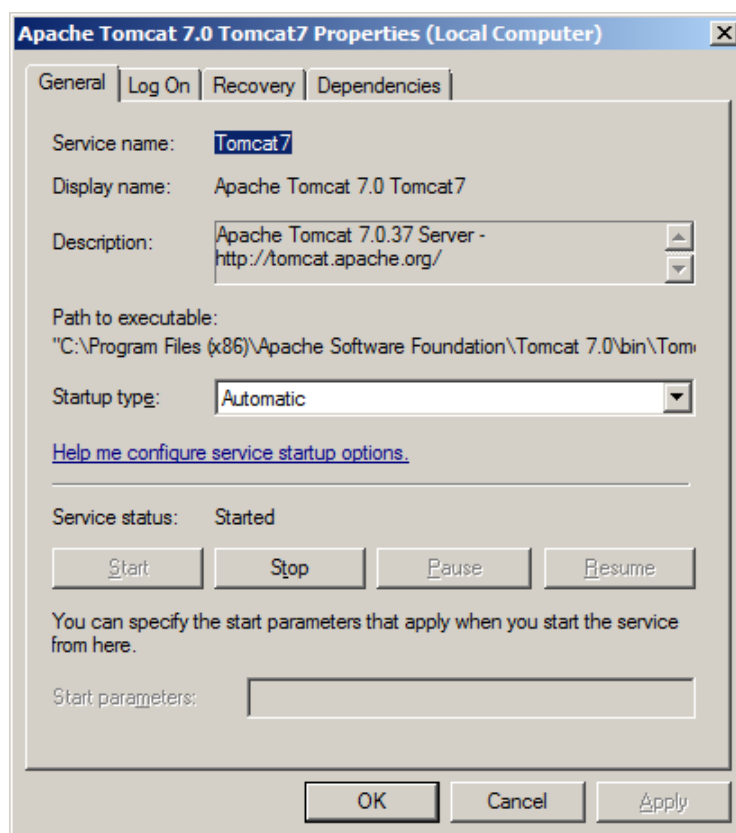
tomcat-users.xml

```
<Connector executor="tomcatThreadPool" port="80" protocol="HTTP/1.1"
connectionTimeout="20000" redirectPort="443" />
```

e.g. Host Manager User:

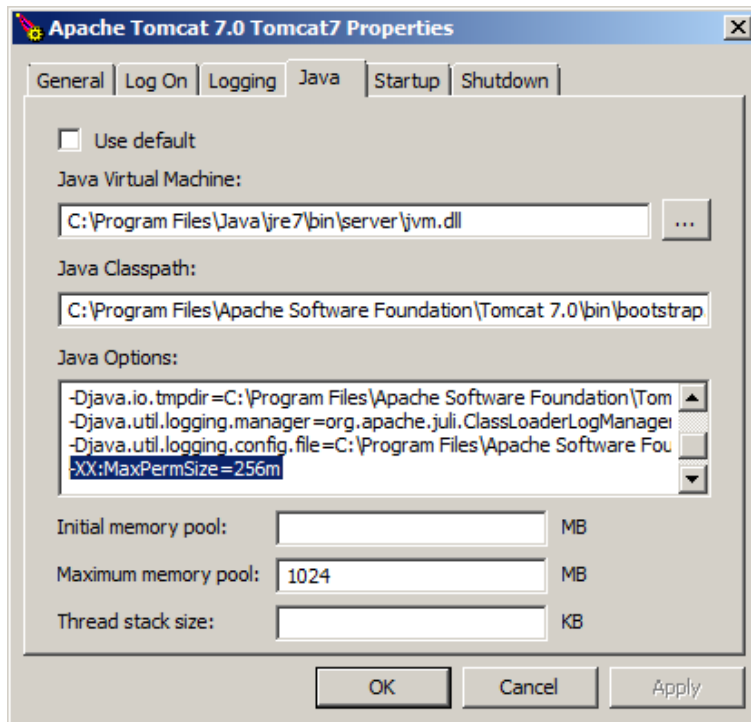
C:\Program Files\Apache Software Foundation\Tomcat 7.0\conf\tomcat-users.xml

3.2 Start Apache service automatically:



3.3 Increase memory

Tomcat Monitor -> Configure

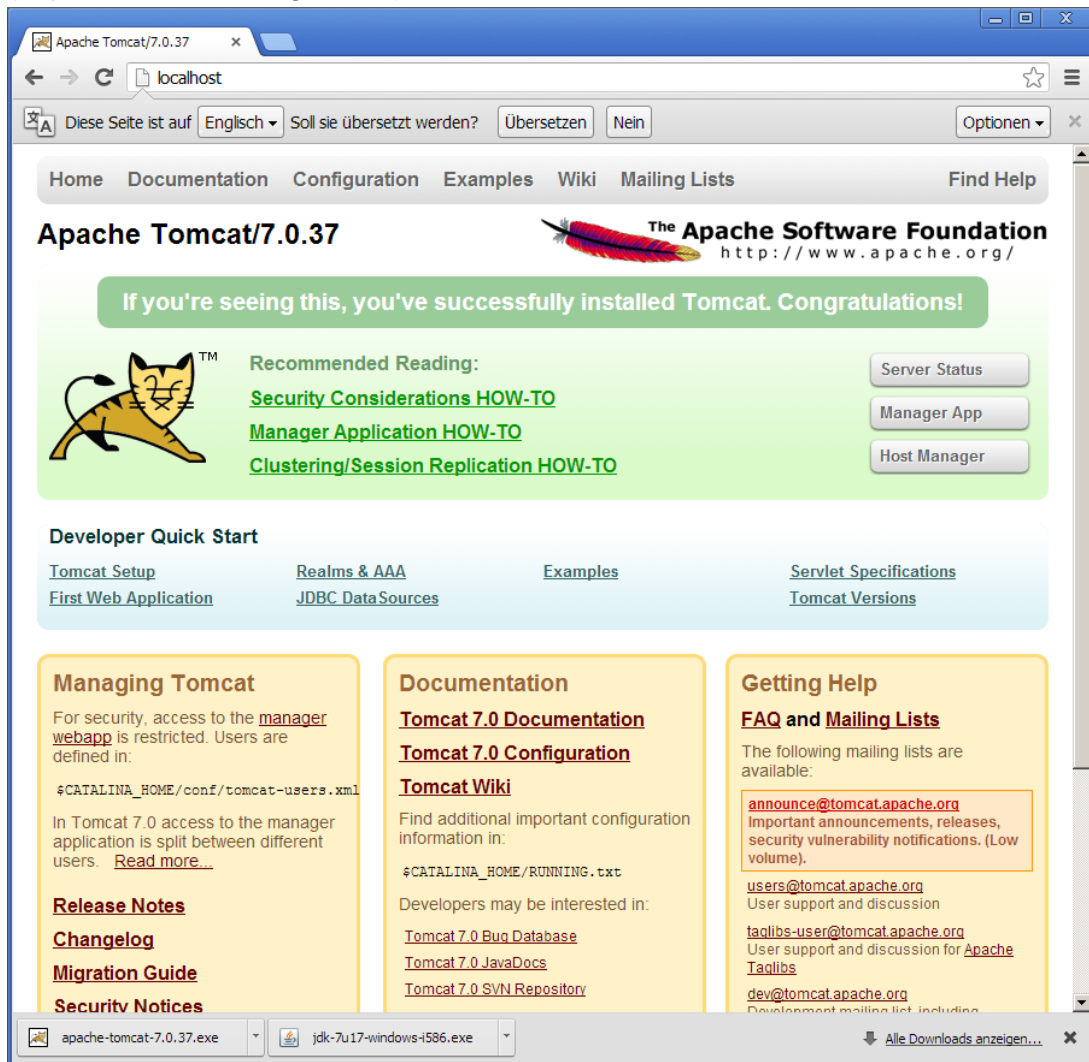


Note: more than 1500MB maximum memory are not supported under a 32bit JVM.

-Add the following line under options: -XX:MaxPermSize=256m (or bigger)

3.4 Check Tomcat startpage and manager

(http://localhost/manager/html):



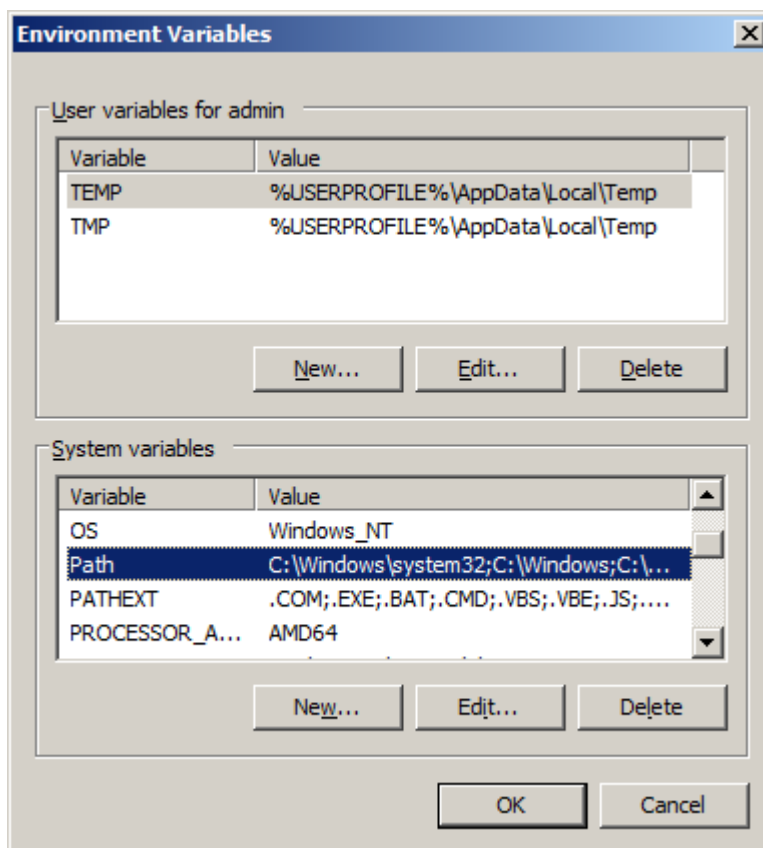
3.5 Check Logfiles:

C:\Program Files\Apache Software Foundation\Tomcat 7.0\logs

tomcat7-stdout.YYYY-MM-DD.log and tomcat7-stderr.YYYY-MM-DD.log

4 WebLCR configuration

4.1 Configure path for native libraries



Add to the path

32bit:

C:\Program Files\Apache Software Foundation\Tomcat 7.0\webapps\webclr\WEB-INF\lib\native\windows

64bit:

C:\Program Files\Apache Software Foundation\Tomcat 7.0\webapps\webclr\WEB-INF\lib\native\windows-64

Restart your PC!

4.2 Fix of the “UnsatisfiedLinkError”

Error java.lang.UnsatisfiedLinkError: C:\Program Files (x86)\Apache Software Foundation\Tomcat 7.0\webapps\webclr\WEB-INF\lib\native\windows\jnwntrenderer.dll:
Can't find dependent libraries

➔ Add JAVA JVM Path to the system path: PATH=%PATH%; C:\Program Files\Java\jre7\bin

4.3 WebLCR Deployment

Copy the file webclr.war to C:\Program Files\Apache Software Foundation\Tomcat 7.0\webapps and restart Tomcat.

4.4 Prepare WebLCR config files

Copy the files *application.properties* und *users.properties* from the folder C:\Program Files\Apache Software Foundation\Tomcat 7.0\webapps\webclr\WEB-INF to C:\Program Files\Apache Software Foundation\Tomcat 7.0\storage\webclr\configuration and edit this files in this folder. (the made settings remain persistent when you deploy again)

4.5 Manage WebLCR user

The file *users.properties* must be adapted per user with the following entry:

username=password,grantedAuthority[,grantedAuthority][,enabled[disabled]

z.B.:

user1=user1,ROLE_USER,CHANNEL_1,CHANNEL_2,CHANNEL_3,CHANNEL_5,SIPEXT
ENSION_877,enabled

4.6 Adapt WebLCR system settings

The file *application.properties* must be adapted related to database connection, SIP server and recorder.

After the Tomcat configuration has been completed, restart the computer!

Test of installation, e.g. with URL:

http://localhost/webclr?username=user1&password=user1

***** End of Document*****